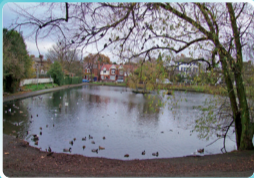




**MUSGRAVE**

# **Chislehurst Residents' Guide**



**2011**

**Boosting Business in Chislehurst**



## Babington House School

Independent School for Boys aged 3 – 7 & Girls 3 – 16



**This thriving and high-achieving school was recently graded as excellent in all areas of school life, by the Independent Schools Inspectorate.**

**“The quality of leadership and management is outstanding.”**

**“Teaching is excellent, enabling pupils to achieve high standards from the early years onwards.”**

**Headteacher** Mrs D Odjawa-Galej

Grange Drive, Off Elmstead Lane, Chislehurst, Kent BR7 5EG

**Telephone** 020 8607 5507

**Email** enquiries@babingtonhouse.com

# CONTENTS

• Foreword .....	5	Listings .....	•
• A Little History .....	6	Places of Worship .....	15
• Location .....	8	Health .....	16
• Local Attractions .....	8	Education .....	18
• Health .....	9	Animal Welfare .....	20
• Churches .....	10	Local Government .....	20
• Education .....	10	Charitable and Voluntary Organisations ..	20
• Shopping .....	11	Clubs and Societies .....	20
• Sport and Leisure .....	11	Women's Organisations .....	21
• Chislehurst Map .....	12/13	Youth Organisations .....	22
		Useful Contacts .....	22

Every effort has been made to ensure information and telephone numbers listed in this guide are accurate. However, the publishers have accepted their liability for any errors or omissions, or loss or damage, resulting therefrom.

Copyright Play Publishing Services, Spence House, Wilborough Industrial Park, Cranleigh Road, Wilborough, Milton, Kent TN10 1PH  
Tel 01222 629776 • Fax 01222 629762 • Email [enquiries@playpublishing.co.uk](mailto:enquiries@playpublishing.co.uk) • [www.playpublishing.co.uk](http://www.playpublishing.co.uk)



## Babington House School

Independent School for Boys aged 3 – 7 & Girls 3 – 14

### Be a part of our success story...

The programme of investing in outstanding facilities for our pupils moves on. With Phase 2 of our expansion project nearing completion, Babington continues its success story.

Why not visit us and see for yourself?

**Headteacher** Mrs D Odgers-Gailey  
Grange Drive, Off Elmstead Lane,  
Chislehurst, Kent BR7 2EG  
**Telephone** 020 8667 5537  
**Email** [enquiries@babingtonhouse.com](mailto:enquiries@babingtonhouse.com)



Queen Mary  
House



*Queen Mary House,  
Chislehurst  
is a charity owned  
residential home with  
en-suite and single  
rooms which we  
proudly consider offers  
a very high quality of  
life to retired ladies.*

FOR A BROCHURE AND/OR VISIT PLEASE CONTACT THE  
Case Secretary on 020 8468 7997

OR WRITE TO

SCBI Office • Queen Mary House • Manor Park Road Chislehurst • Kent BR7 5PY  
[www.queenmaryhouse.org](http://www.queenmaryhouse.org)

## C.M.W. PLASTERING



Plastering, Rendering, Drylining,  
Floor Screeding,  
Dot and Dab,  
Metal and Timber Stud Work.

**NO JOB TOO SMALL**

For your **FREE** quote  
Tel: 07944 776040

Email: [chris\\_waldman@msn.com](mailto:chris_waldman@msn.com)

# FOREWORD

WHEN you need to find the telephone number of your nearest chemist, the address of a local school or where to go to buy something special, where should you look?

You could wade through the pages of a directory, or search the Internet, but how much easier and quicker it is to keep this little residents' guide at hand.

In it you will find a wealth of local references, neatly gathered together in easy-to-find sections. It also has a street map on the cover page, which can be invaluable when looking for an unfamiliar road.

This guide is designed for those who live in Chislehurst, or are planning to do so. It will acquaint them with what the town has to offer.

It has been well supported by advertisers, who have recognised its value in reaching their customers.

The Chislehurst Residents' Guide is published every year and is distributed free.

Sharon Bell, Publisher



Chislehurst Sign



## WELHAM JONES

An independent family owned company

Funeral Directors & Monumental Masons



Traditional Funerals



Contemporary Funerals



Our Family Funerals & Monumental Masons



Monuments & Memorials



Personalised Funerals



Pre-paid Funeral Plans

Chislehurst - 0208 467 2222

4 Belmont Parade, Green Lane, BR7 6AN



[www.welhamjones.co.uk](http://www.welhamjones.co.uk)

24 hour Service  
Pre-paid funeral plans



# A LITTLE HISTORY

THE desire of almost every resident to preserve, protect and promote the passage of time in the delightful village of Chislehurst is evident from first glimpse of the main approach to this leafy haven on the edge of London's sprawling suburbs.

A war memorial at the Chislehurst Common crossroads gateway stands tall and proud as a powerful and moving shrine to the memories of the 251 souls from this area who lost their lives in the two great wars.

Their selfless courage and contribution to victory in Europe will never be forgotten by this community and nor will many other aspects of history in this parish if the custodians of local record, fabric and artefacts associated with Chislehurst life down the centuries, maintain the standards of care and consideration they have shown over the decades for all things past.

The main road into Chislehurst is a gift in itself from the past, reminding all motorists pointing their vehicles through the tree-lined route that dense woodland once covered the many hundreds of acres of Crown Land on which the village stands. Every effort, it seems, has been made to impose preservation orders on trees as much as bricks and mortar in a district where history is as important as the present.

No surprise then that no ordinary roadside village sign stands on the edge of this neighbourhood. Chislehurst's sign is a work of art. Erected in 1955 to commemorate Queen Elizabeth II's coronation, it depicts the moment Queen Elizabeth I prepared to set her crown on the shoulder of the knight-in-waiting, Thomas Walsingham, in 1577. Sir Thomas was the permanent owner of Scadbury Manor, built on land that today is best known as Scadbury Park Nature Reserve, another link with the past to be found adjacent to the A222 Perry Street highway leading to the heart of Chislehurst.

There is much evidence of efforts by successive local authorities and local historians to link Chislehurst's past with its present. In the beginning, Chislehurst was a scattering of village dwellings upon a hilltop surrounded by large country estates hunting some several commons. Traces of occupation date back to the Iron Age. The derivation of the village name is Anglo Saxon, meaning gravel and woodland. The first mention of Chislehurst can be found in an AD977 Charter reference to "Chislehurst Manor".

Bromley, Eltham and Motingham were well established neighbourhoods before Chislehurst gained any prominence. There is no reference to Chislehurst in the Domesday Book, but Chislehurst Church is mentioned in 1089. St Nicholas parish church on the Common became a prominent meeting point for an expanding community developing within the three manors of Chislehurst, Kernal and Scadbury.

These great manors, and their owners, were to have a lasting influence on the development of the peaceful, rural parish over many centuries. As with most towns, the arrival of the railways in the mid-19th century boosted the population and brought an energy to the deep, wooded paradise of large manor homes and more humble dwellings, occupied by hard working local families doing their best to scratch a living. Even today, the affluent and the not so rich go about their daily lives in pleasure and agreeable harmony.



The War Memorial

Napoleon III, the Emperor of France, lived and died in exile at Camden Place, a magnificent property occupied these days by Chislehurst Golf Club. His body was buried in St Mary's Church in 1873, before it was exhumed and moved to Farnborough Abbey. Graphic evidence of Chislehurst's connections with the French Imperial family can be found today on road signs.

Chislehurst continued to develop rapidly from Victorian times. Farmland was sold off for the development of large properties, but any threat of encroachment onto the various Commons by the planners was resisted vigorously, with support from various Acts of Parliament. The ancient woodland of Fern Wood was secured from any development in the 1920s and the Harewood estate gained the same protection after the termination of hostilities in the Second World War.

No street reflects Chislehurst's carefully nurtured and fiercely guarded love affair with the past more than Kennal Road, which took its name from Kennal Manor, first mentioned in deeds in 1250. Canon Murray, rector in charge of St Nicholas Church for much of the 1800s, used a footpath through this patch to catch the "coach and four" service that ran daily between Maidstone and London, before land was developed to deliver the magnificent houses that today adorn one of England's finest residential roads.

Many of the original owners of property in Kennal Road took full advantage of the arrival of the railway to make daily trips to their places of work in the capital, thus proving that the age of steam could allow a man to work in London and live with his family in splendid rural isolation.

Mr Samuel Anst was started the development of Kennal Road when he bought the freehold of Kennal Estate in 1871 from New College, Oxford. Records show that by 1894 there were 13 large houses and today this substantial neighbourhood again reflects Chislehurst's capacity for blending the past with the present with admirable results. The Tiers family are among the most notable families to have held the front door keys to properties in this road. Many of the giant oaks that obscure the properties carry protection orders that guarantee their longevity and prevent any invasion of privacy for the owners.

## Plan for your family's future ...



For expert legal advice on  
probate, wills and trusts  
call us on 020 8290 0440  
[www.thackraywills.com](http://www.thackraywills.com)



## Treat Yourself...



Special Private Club Offer

£80

with parking (includes Clubhouse & Bar)

Society Packages from

£30

per person through the season

Green Fees from £25

Full Membership available from just £500



...more than just a golf club

Chislehurst Golf Club, The Clubhouse, Fern Wood, Chislehurst, Kent DA7 1JG  
Tel: 01892 517777 | [www.chislehurstgolfclub.com](http://www.chislehurstgolfclub.com)

*As The Chislehurst Society's splendid website is pleased to remind its many visitors: "For well over 100 years there has existed locally a great sense of pride that Chislehurst is just that bit different from its neighbouring parishes and towns."*

The truth is that Chislehurst is no ordinary suburb and never will be, encased as it is in layers of protective wrapping woven so carefully and lovingly into its long and proud history.

## LOCATION

CHISLEHURST has all the advantages of a location situated within easy striking distance of London and Europe with few of the disadvantages associated with so-called suburbs. Travel by road, air, rail and bus is easy from an area that will have more trees than houses, offering a more gracious lifestyle than one would expect from a community built south east of the capital on the edge of the concrete sprawl.

Situated less than 30 minutes by car from three motorways, the M20, M25 and M2, Chislehurst is a dream location for anyone wishing to commute on a daily basis or make journeys to other parts of Britain and the continent.

London Heathrow, London Gatwick and London Stansted airports can be reached by car in less than one-and-a-half hours, and Eurostar's high speed train passenger services are available from the new Ebbsfleet station off the M2, less than 40 minutes journey time from Chislehurst and Ashford International station off the M20, just 45 minutes from the village. The cross-Channel rail-car shuttle service from Cheriton, Folkestone and the ferry ports of Folkestone and Dover are also reached by car in just over the hour.

Rail travel by Southeastern trains from Chislehurst is frequent and fast to local destinations and the capital. Two trains per hour travel to and from central London and bus transport is in plentiful supply from Chislehurst to many destinations within 20 miles of the journey start.

Local cycle routes encourage residents to rely more on energy saving pedal-power and with so much greenery close at hand, an escape into the country is within easy reach for cyclists wanting to get out of town for some fresh air.

## LOCAL ATTRACTIONS

MORE than 20 miles of caverns, dug over a period of 8,000 years, make-up the labyrinth of dark passageways, known to thousands of visitors as Chislehurst Caves.

Few trips to locations of interest are more eagerly anticipated than journeys for young and old to this miracle of underground industry beneath your feet.

All man made, the tunnels form a maze covering six hectares. They were dug to provide chalk used in lime burning and brickmaking for the building of London, also for flints to fire the rinderbones and flintlock guns of josteryeats. They were first opened to the public in 1900. During the 1914-18 War, the mines became part of Woolwich Arsenal and were used as a munitions depot. A narrow gauge railway was laid for easier access through the passageways.



Chislehurst Caves

During World War II thousands of people used the caves as shelter from air raids. One woman gave birth in the caves during the hostilities. Understandably, she named her newly-born daughter "Caveira".

A tourist attraction and education centre with gift shop and cafe catering facilities, Chislehurst Caves are rarely empty.

Scadbury Park is a 500-acre nature reserve of meadows, woodland and hedgerows, situated just off Old Ferry Street, Chislehurst. It forms part of the Jubilee Country Park wildlife corridor along what is known as the London Loop. First reference to Scadbury Park dates back to the mid-1200s. The Tudor manor house belonged to the Walsingham family, Sir Thomas famous for acting as Queen Elizabeth I's spy-master.

The park has an active Friends Group, formed to promote conservation and protect the park. They undertake practical tasks, logging information on plants and wildlife.

## HEALTH

CHISLEHURST has an excellent range of health facilities, dominated by the Queen Mary's Hospital in Sidcup. A local district general hospital, the QMS serves a catchment population of 300,000. Queen Mary's NHS Trust is rated the sixth most improved in the country.

The Trust management describes Queen Mary's as a patient focused hospital for local people with a 24-hour accident and emergency service where a patient can be treated for major illnesses, receive planned surgery, maternity care and paediatric services. Local doctors are encouraged to use the hospital's diagnostic services in a partnership structure.

## DREW (UK) FINANCIAL SERVICES

We specialise in providing a service to clients who need a financial product or wish to take out an investment but who do not require advice about its suitability and do not want to pay fees to a financial adviser.

Our execution only\* service offers competitive discounts on the following range of products:

- PENSIONS
- INVESTMENTS
- LIFE ASSURANCE
- BUILDINGS AND CONTENTS INSURANCE
- SECURED LOANS

\*Our execution only service is for clients who do not require advice.

Product information can be provided but no advice on its merits or suitability will be given. The amount of discount/rebate will depend on the product chosen.

Consumer Credit Licence Number 299741

FSA No. 180995

Tel: 020 8302 0235 or 07955 517232 • Email: [drewuk@btinternet.com](mailto:drewuk@btinternet.com)

QMS provides a range of inpatient, outpatient and community services. Services include cancer, diabetics, planned surgery and medical services, emergency care, nursing, midwifery and allied health, medical education, pharmacy, children, rheumatology, maternity and pathology.

The Chislehurst Medical Practice has surgery and health clinic facilities. Dr E. Brander heads-up another practice at 11 Red Hill, Chislehurst. Nearby Bromley, Sidcup and Orpington are also well served by GP services.

## CHURCHES

THE glorious St Nicholas Church was built in the 15th century, though evidence shows that a church has been on the site for more than 1,000 years. The re-building incorporated some of the west wall of the earlier church and the Norman font is still in use to this day.

In 1849 the chancel was partially rebuilt. The organ, built in 1856, was rebuilt shortly afterwards in its present position, situated over the vestry. The organ itself has been overhauled and restored on several occasions. The pews are Victorian, but an old sepia toned photograph shows the original seats were boxed pews before alterations were made in 1849.

After the First World War, the east end was fitted out as a memorial to the dead of that war. It took the form of a lady chapel, a part of the church used for smaller services. Further names were added to the war memorial tablets after the Second World War.

The Scadbury chapel in the north aisle was traditionally used by the Lords of the Mann or Scadbury, one of whom was Sir Francis Walsingham, opponent to Queen Elizabeth I. His son, Sir Thomas Walsingham, rebuilt the church in its perpendicular style.

A woodchipper's will in 1459 left money for fencing the left side of the churchyard and some of that work is still in evidence today. The graves of Sir William Willett, a campaigner for daylight saving time and Sir Malcolm Campbell, the land speed record holder in 1935 and water speed record holder on Coniston Water in 1939, can be found in the churchyard.

Worshippers of the Catholic faith attend St Patrick's Church on Red Hill, Chislehurst. Nearby is the Church of Annunciation of Blessed Virgin Mary, a building that dominates the High Street and provides an accurate and useful clock for the local populace.



St. Mary's RC Church

## EDUCATION

THE Chislehurst catchment area is well served by infant, junior and secondary schools representing the state and independent sectors.

The quality of schools and colleges available for all ages and abilities in the Chislehurst area is reflected by the popularity of the village for home-owners seeking a decent and challenging environment for their children's education.

## SHOPPING

THE gateway to Chislehurst's prime High Street shopping area is as spectacular as anything you could find in the south-east. Some centres have a feature of architectural merit, a monumental stone tablet, or a place of entertainment that catches the eye. This village has a pond of such beauty that many an artist has committed the scene to canvas for pleasure and profit.

The central shopping area has somehow survived the ravages of economic difficulties to persuade shop owners to believe a decent living can still be made by small, independent traders.

Chislehurst has many small, independent shops selling a diversity of wares to make a stroll through this High Street a fascinating experience.

Retailers include a haircare salon, ladies fashion shops, dry cleaners, newsagents, local chemists, health and medical centre, florists, cafes, restaurants, estate agents, banks, post office, surveyors, bookmakers, public houses, plumbing services and a local garage business only too happy to negotiate vehicle service fees.

Chislehurst is served by two main shopping communities, the High Street traders and Royal Parade. As close as it is to London, there is every reason for residents to support their local shops and businesses without having to make that journey up to town.

## SPORT AND LEISURE

CHISLEHURST offers a wide range of sports clubs covering many popular activities. Residents also have the opportunity to travel to Bromley and other towns nearby if, by some remote chance, the sport of their choice is not available closer to home.

No sporting environment could be more attractive than Chislehurst Golf Club, occupying a clubhouse that once provided a home to the exiled French emperor Napoleon III. Built in the early 18th century, Camden Place is as elegant and impressive as any golf headquarters in the south-east region. Many members hire the clubhouse for private functions, including family wedding receptions.

Chislehurst Golf Club, based in Camden Park Road, has an 18-hole course covering 65 acres of undulating parkland.

WG Grace made several appearances on the cricket ground at Chislehurst Common, the home of Chislehurst and West Kent Cricket Club. Eight acres – then known as West Kent Cricket Club – by the Lord of the Manor of Chislehurst and the first match was held there in 1822. Declining membership forced West Kent CC to dissolve in 1980 but from the sadness of that closure has sprung the new club. The cricket pavilion, built in 1899, is still in use today.



### All the Arts Theatre School Chislehurst & Motingham

Drama, Street Dancing and Singing  
[www.allthearts.co.uk](http://www.allthearts.co.uk) • 0208 856 2384

Affordable, professional, confidence building classes for kids ages 6-18 years

'Little Stars' class for kids ages 3-5 years

Successful Children's casting agency for TV & Theatre



## MATTISON & CO

10A ROYAL PARADE

Chartered Accountants • Registered Auditors  
 for professional, personal and friendly help with

**TAX RETURNS • ACCOUNTS**  
**BOOKKEEPING • PAYROLL SERVICES**  
**BUSINESS ADVICE • VALUE ADDED TAX**

—0000000—

**Telephone: 020 8295 3987**  
**E-mail: [info@mattico.co.uk](mailto:info@mattico.co.uk)**

# Wrattens Gifts & Café

Visitors may browse and meander through each enchanting display or simply relax in the congenial atmosphere of the café.

Over 2000 square feet, captivating a variety of merchandise from over 40 independent dealers and craft people.

0208 467 7400

[www.wrattens.co.uk](http://www.wrattens.co.uk)

51-53 High Street,  
Chislehurst

## Derek Dobson & Co Tel: 020 8468 1300

Personal Tax Consultants • Friendly, Professional & Confidential  
Self Assessment Tax Returns • Accounts Prepared • Tax Affairs Agreed  
Established 40 Years, Free Initial Discussion  
[www.derekdobson.com](http://www.derekdobson.com) • 10 Stages Field, Chislehurst SE7 6JZ



## MEAD ROAD INFANT SCHOOL

Mead Road  
Chislehurst  
SE7 6AD

020 8467 1730

[admin@meadroad.infant.sch.uk](mailto:admin@meadroad.infant.sch.uk)  
[www.meadroad.infant.sch.uk](http://www.meadroad.infant.sch.uk)



*'Small enough for everyone to count'*

'Mead Road  
Infant School  
is an outstanding  
school'  
Ofsted  
March 2009  
November 2005

Missed advertising in this guide and want to advertise in the next one?

Contact one of our sales executives to discuss your requirements on 01223 643574

Don't miss out on this fabulous advertising opportunity

For further details and free samples contact  
The Publishing Services, Resource House, Willborough Industrial Park, Stroudington Road,  
Willborough, Lifford, Co. Wick 170 070 • Tel: 01223 643574 • Email: [adsales@thepublishing.co.uk](mailto:adsales@thepublishing.co.uk)



Chislehurst Football Club, founded in 1935, play in the Kent County League. Their ground is in Elmwood Lane, Chislehurst, the home also of the Chislehurst Sports and Country Club.

The history of Chislehurst Lawn Tennis Club is a triumph of co-operation and commonsense between a local authority and the local community. The local council announced its intention to close the four public tennis courts in Chislehurst Recreation Ground and use the tarmac area as a car park. The courts had been used for several decades and several local tennis enthusiasts grouped together to persuade the council they could manage and maintain the tennis venues.

In 1976, the current club was founded, first as a club for social tennis and then for competitive matches. Chislehurst provided teams for local leagues and by 1985 a new clubhouse had been built. Today, the club is active and vibrant with men, ladies and junior teams competing in the North Kent League. The club is located on the recreation ground, behind Sainsbury's supermarket. Vehicle access is available from Tappess Drive.

Old Elthamians Rugby Club's history dates back to before the First World War. In those days they played near Lee Green. Today they play at Peabury Avenue, Chislehurst where they field senior teams at a high level of rugby union, youth, junior and mini teams.



Chislehurst Common



## The Crown Inn



School Road, Chislehurst, Kent BR7 5PQ

***A warm welcome awaits you from Reuben, Katie and all the staff***

The pub is situated right on Chislehurst Common. Children and dogs welcome.

We have Sky Sports and ESPN on two flat screens.

Our restaurant is open 12-3 and 6-9 Monday to Thursday and all day Friday and Saturday.

Traditional Roast every Sunday 12-5. Booking is essential.

We have a fabulous function room for up to 70 guests plus 7 en-suite letting rooms from £95 B&B for 2 guests.

The Petanque team plays on a Wednesday, new members welcome. Pitch is available for groups.

Monthly events include: Jazz Lunch • Open Mike Night • Speed Dating

**Check our website for more information:**

[www.crownchislehurst.co.uk](http://www.crownchislehurst.co.uk) • Email: [crownchislehurst@bepherdswine.co.uk](mailto:crownchislehurst@bepherdswine.co.uk)

Phone: 0208 467 7326 • Fax: 0208 395 1856



# LISTINGS

*Accidentally Missed – If your organisation has accidentally been left out of our listings, please advise us so that details may appear in the next edition of this guide.*

## PLACES OF WORSHIP

### Chislehurst Methodist Church

Prince Imperial Road, Chislehurst BR7 3LX  
Tel: 0208 468 7695  
Email: [chmch@talktalk.net](mailto:chmch@talktalk.net)  
[www.chislehurstmethodistchurch.org.uk](http://www.chislehurstmethodistchurch.org.uk)

### Christ Church

49 Lubbock Road  
Chislehurst BR7 5JJ  
Tel: 0208 4625081  
Email: [ccchcoffice@aol.com](mailto:ccchcoffice@aol.com)  
[www.christchurchchislehurst.com](http://www.christchurchchislehurst.com)

### Elmwood Baptist Church

Elmwood Lane  
Chislehurst BR7 5EL  
Contact: Malcolm Jones  
Tel: 0208 8574785

### Ichthos Christian Fellowship Chislehurst

Family Worship every Sunday 10am  
Coopers Technology College  
Hawkwood Lane, Chislehurst BR7 5FS  
Tel: 0208 8536898  
Contact: Martin Hall  
(Congregation Leader)  
[www.ichthoschislehurst.org.uk](http://www.ichthoschislehurst.org.uk)

### St Mary's Catholic Church

Crown Lane, Chislehurst BR7 5PL  
Tel: 0208 4673215

### St Nicholas C of E Church

Parish Office: Church Lane  
Chislehurst BR7 5PE  
Tel: 0208 4670196  
Email: [parishchurch@bconnect.com](mailto:parishchurch@bconnect.com)  
[www.stnicholas-chislehurst.org.uk](http://www.stnicholas-chislehurst.org.uk)





## Nightingales

Home Care



**Excellent Retirement Care...  
and that's official**

With our service rated as Excellent by the Care Quality Commission, if you feel your loved one deserves the best, please give us a call



[www.nightingales.co.uk](http://www.nightingales.co.uk)  
**020 8466 9664**  
11 Southby Avenue, Boreley, Kent ME16 8JL



St. Nicholas Parish Church

#### St Patrick's RC Church

14 Red Hill, Chislehurst BR7 6DB  
 Contact: Reverend George Webster  
 Tel: 0208 4672325

#### HEALTH

##### NHS Direct

Tel: 0845 46 47  
 Provides advice and information about health  
 and the NHS. Available 24 hours a day.  
[www.nhsdirect.nhs.uk](http://www.nhsdirect.nhs.uk)

##### Hospitals

##### Queen Mary's Hospital

Reginal Avenue, Sidcup DA14 6LT  
 Tel: 0208 3022678

##### Doctors

##### Chislehurst Medical Practice

42 High Street, Chislehurst BR7 3AQ  
 Tel: 0844 477 8989

##### Dr Beckers Surgery

11 Red Hill, Chislehurst BR7 6DB  
 Tel: 0208 2952256

##### The Cold Harbour Surgery

79 William Bantock Drive  
 Elham SE9 5JD  
 Tel: 0844 499 6990

##### The Hill Surgery

145 White Horse Hill  
 Chislehurst BR7 6DH  
 Tel: 0844 499 6990

##### The Woodlands Practice

11 Red Hill, Chislehurst BR7 6DB  
 Tel: 0208 4687779

##### Chemist

##### Beats the Chemist

77 Queensway  
 Fern Wood BR3 1DX  
 Tel: 01689 821573  
[www.beats.com](http://www.beats.com)

##### Lloyd's Pharmacy

59 High Street, Chislehurst BR7 5AF  
 Tel: 0208 4673158  
[www.lloydspharmacy.co.uk](http://www.lloydspharmacy.co.uk)

##### Dentist

##### Chislehurst Dental Care

8 Widdon Parade, Widdon Road  
 Chislehurst BR7 5DW  
 Tel: 0208 4678666

##### Oakwood Dental Care

Sunnyways, Prince Imperial Road  
 Chislehurst BR7 5LX  
 Tel: 0208 4675139

##### Sigman Dental

5c High Street, Chislehurst BR7 5AB  
 Tel: 0208 4671000  
[www.sigmandental.co.uk](http://www.sigmandental.co.uk)

##### Opticians

##### Beats Opticians

Incorporating D & A  
 12 Chisworth Parade, Fern Wood BR3 1DF  
 Tel: 01689 823250

##### Seven Harris Opticians

16 Station Square  
 Fern Wood BR3 1NA  
 Tel: 01689 831726

##### Thomas H Collison Ltd

27 High Street, Chislehurst BR7 5AE  
 Tel: 0208 4674433

**Helplines**

**Alcoholics Anonymous**

Tel: 0845 769 7555

[www.alcoholics-anonymous.org.uk](http://www.alcoholics-anonymous.org.uk)

**ChildLine**

Tel: 0800 1111

ChildLine is a free, national helpline for children and young people in trouble or danger.

[www.childline.org.uk](http://www.childline.org.uk)

**Drinkline**

Tel: 0800 917 82 82

Drinkline is a confidential national alcohol helpline providing counselling and advice.

**FRANK Campaign Helpline**

Tel: 0800 776600

Helpline provides information and advice about drugs and local services.

[www.talktofrank.com](http://www.talktofrank.com)

**GamCare**

Tel: 0845 6000 135

A helpline for gamblers and those affected.

**Gingerbread Single Parent Helpline**

Tel: 0800 802 0925

Free independent information and advice on all issues affecting single parents.

Mon-Fri 9am-5pm or Wed 9am-8pm

[www.gingerbread.org.uk](http://www.gingerbread.org.uk)

**Message Home**

Tel: 0800 700 740

A confidential helpline for people who have run away or left home giving them the ability to send a message home.

Available 24 hours a day, seven days a week.

**National Debtline**

Tel: 0800 808 4000

Free confidential advice for people with debt problems.

**National Domestic Violence**

Tel: 0800 2000 247

A free phone, 24 hour national domestic helpline.

[www.ndvgs.org.uk](http://www.ndvgs.org.uk)

**Preston  
Mellor  
Harrison**

**CHISLEHURST  
SOLICITORS**

**020 8468 7025**

[www.pmh Solicitors.com](http://www.pmh Solicitors.com)

30 HIGH STREET, CHISLEHURST, KENT BR7 5AS

A FULL RANGE OF LEGAL SERVICES

- RESIDENTIAL & COMMERCIAL CONVEYANCING
- WILLS & PROBATE • MATRIMONIAL • EMPLOYMENT • CIVIL LITIGATION
- LEASES & TENANCY AGREEMENTS

**National Missing Persons**

Tel: 0500 700 700

info@missingpeople.org.uk

www.missingpeople.org.uk

A freephone national helpline.

**Parentline Plus**

Tel: 0800 800 2222

Provides a confidential helpline for anyone in a parenting role.

www.parentlineplus.org.uk

**Samaritans**

Tel: 08457 90 90 90

Providing confidential, emotional

support for all age groups.

www.samaritans.org.uk

**Sexwise**

Tel: 0800 28 29 30

Free confidential advice line for under 18's on anything to do with sex, relationships and contraception.

**EDUCATION****Nursery & Pre-Schools****Blossom Years Children's****Day Nursery**

2c Imperial Way, Chislehurst BR7 6JP

Tel: 0208 2952137

Email: enquiries@blossomyears.co.uk

**Bury Bess (Farringham)**

Farringham School

Ferry Street, Chislehurst BR7 6LR

Tel: 0208 4677396

**Christ Church Pre-School**

40 Lubbock Road, Chislehurst BR7 5JJ

Contact: Mrs S Walker &amp; Mrs L Perry

Tel: 0208 2492670

**Farringham Pre-School**

Ferry Street, Chislehurst BR7 6LR

Tel: 0208 4678296

www.farringham.org.uk

**Foxbury Under Five**

Contact: Mrs Gaila Eade

Tel: 07971226864

Email: foxburyunder5@yahoo.co.uk

**Little Learners Pre-School**

St Francis Hall, Greencourt Road

Perry Wood BR5 1QW

Tel: 0208 4678928

**Lakewood Pre School**

Lakewood Hall behind

Perry Wood Methodist Church

Lakewood Road

Perry Wood BR5 1BJ

Ages 2-5

Tel: 07772026064

**Pre-School Activities****Monkey Music**

Music classes for babies &amp; young children

Chislehurst Methodist Church

Prince Imperial Road, Chislehurst

Tel: 0208 7776700

Contact: Helen Whitaker

Ages 3 months to 4 years

Weds, Thurs &amp; Fri

Email: helen.whitaker@monkeymusic.co.uk

www.monkeymusic.co.uk

**Primary Schools****Edgely Primary School**

Belmore Lane

Chislehurst BR7 6BL

Tel: 0208 4674199

Email: admin@edgely.bromley.sch.uk

www.edgely.bromley.sch.uk

**Mead Road Infant School**

Mead Road

Chislehurst BR7 6AD

Tel: 0208 4671730

Email: admin@meadroad.bromley.sch.uk

www.meadroad.bromley.sch.uk

**Red Hill Primary School**

Red Hill, Chislehurst BR7 6DA

Tel: 0208 4674223

Email: admin@redhill.bromley.sch.uk

www.redhill.bromley.sch.uk

**Chislehurst (St Nicholas)**

C of E Primary School

School Lane, Chislehurst BR7 5PQ

Tel: 0208 4672993

Email: admin@chislehurst-cofe.bromley.sch.uk

*Secondary Schools & Colleges*

**Beaverwood School for Girls**

Beaverwood Road  
Chislehurst BR7 6HE  
Tel: 0208 3003156  
[www.beaverwood.bromley.sch.uk](http://www.beaverwood.bromley.sch.uk)

**Buller Wood School**

St Nicolas Lane  
Chislehurst BR7 5LJ  
Tel: 0208 4672280  
Email: [office@bullerwood.bromley.sch.uk](mailto:office@bullerwood.bromley.sch.uk)  
[www.bullerwood.bromley.sch.uk](http://www.bullerwood.bromley.sch.uk)

**Coopers Technology College**

Hawthorn Lane, Chislehurst BR7 5PS  
Tel: 0208 4673263  
[www.coopersc.com](http://www.coopersc.com)

*Independent Schools*

**Babington House School**

Grange Drive, Chislehurst BR7 5ES  
Tel: 0208 4675537  
[www.babingtonhouse.com](http://www.babingtonhouse.com)



**Babington House School**

**Breaside Preparatory School**

41-43 Orchard Road  
Bromley, Kent BR1 2PR  
Tel: 0208 4600916  
Email: [info@breaside.co.uk](mailto:info@breaside.co.uk)  
[www.breaside.co.uk](http://www.breaside.co.uk)

**Farringtons School**

Ferry Street, Chislehurst BR7 6LR  
Tel: 0208 4670256  
[www.farringtons.org.uk](http://www.farringtons.org.uk)

**Buying or selling...**



For expert legal advice on  
**conveyancing & property**  
call us on 020 8790 0440  
[www.thecharnywilliams.com](http://www.thecharnywilliams.com)



**frootes media**

From creative thinking comes creative design

**Be in control with a content managed website!**

Frootes Media are now offering a content managed website for only £345.00 inc VAT

This offer includes:

- FREE** hosting for the first year
- FREE** training session. We will teach you how to update your website
- FREE** telephone support for as long as your website is hosted with us
- FREE** integral blog facility with your website

Choose from a series of quality templates

To book a consultation, please contact  
Tony Cavallo on:

**Tel: 020 8760 9990**  
**Mob: 07701 021 649**  
**Email: [tony@frootes.com](mailto:tony@frootes.com)**

**Special Schools****Marjorie McClure Special School**

Hawthorn Lane, Chislehurst BR7 5PS

Tel: 0208 4670174

[www.marjoriemcclure.org.uk](http://www.marjoriemcclure.org.uk)**Adult Education****Next Step Careers & Learning Advice for Adults**

Held at: Chislehurst Library

Every Tuesday 10am–4pm

Every alternate Friday 10am–4pm

Contact: Jennie James

Tel: 07715 791485

Email: [jennie.james@nextstep.co.uk](mailto:jennie.james@nextstep.co.uk)<https://nextstep.direct.gov.uk>**ANIMAL WELFARE****RSPCA Country Line**

Tel: 0300 1234 999

Available 24 hours a day,

seven days a week.

**LOCAL GOVERNMENT****County Council****Bromley London Borough**

Civic Centre, Stockwell Close

Bromley BR1 3LH

Tel: 0208 4643333

Open Hours: Mon–Fri 8.30am–5.30pm

**Town Councillors****Chislehurst Ward**

Councillor Eric Boshard (Con)

Tel: 01689 898205

Email: [eric.boshard@bromley.gov.uk](mailto:eric.boshard@bromley.gov.uk)

Councillor Kary Boughey (Con)

Tel: 020 8467 7572

Email: [kary.boughey@bromley.gov.uk](mailto:kary.boughey@bromley.gov.uk)

Councillor Ian F. Payne (Con)

Tel: 07834 418229

Email: [ian.payne@bromley.gov.uk](mailto:ian.payne@bromley.gov.uk)**CHARITABLE & VOLUNTARY ORGANISATIONS****2gether (Charity Shop)**

103 High Street, Chislehurst BR7 5AG

Tel: 0208 468 7707

Email: [info@2gethershop.org.uk](mailto:info@2gethershop.org.uk)[www.2gethershop.org.uk](http://www.2gethershop.org.uk)**British Red Cross**

Chislehurst Centre, Hornbrook House

High Street, Chislehurst BR7 5AB

Tel: 0208 4672363

[www.redcross.org.uk](http://www.redcross.org.uk)**Cancer Research UK**

Secretary: Joan Preston

34 Chiltern Gardens, Bromley BR2 0PT

Tel: 0208 464 3749 / 07958 548504

Email: [joanne.preston@ukworld.com](mailto:joanne.preston@ukworld.com)**Churches Together in Chislehurst (Charity Shop)**

66 High Street, Chislehurst BR7 5AG

Tel: 0208 395 3624

Raising funds for World Need

**CLUBS & SOCIETIES****All the Arts Theatre School Chislehurst**

Tel: 0208 850 2384

Email: [enquiries@allthearts.co.uk](mailto:enquiries@allthearts.co.uk)[www.allthearts.co.uk](http://www.allthearts.co.uk)**Chislehurst Artists**

Meet every 3rd Tuesday of the month

also weekly practical sessions

Email: [groups.artclub@ukworld.com](mailto:groups.artclub@ukworld.com)[www.chislehurstartists.co.uk](http://www.chislehurstartists.co.uk)**Chislehurst Chess Club**

Meet at: Chislehurst Methodist Church

Prince Imperial Road, Chislehurst BR7 5LX

Contact: Mr Brian Drew, Secretary

Tel: 01689 899636

**Chislehurst Ladies Club**

Meet at: Room above Chislehurst Library on

3rd Thursday of every month Mon

Over 55s Only.

Contact: Mrs Jill James

Tel: 0208 4674897

**Chislehurst Probus Club**

Meet at: Chislehurst Golf Club

Cavendon Place

Chislehurst BR7 5HJ

On the 1st &amp; 3rd Wednesday of every month

for retired professional men.

Contact: Mr A Hickey

Tel: 0208 4674988

**Chislehurst Rotary Club**

Meet Monday evenings at:  
**Chislehurst Golf Club**  
 Camden Park Road  
 Chislehurst  
 BR7 5HJ  
 Contact: The Rotary Club of Chislehurst  
 c/o The Chislehurst Business Centre  
 1 Bromley Lane  
 Chislehurst BR7 6LN  
 Contact: Tony Willis  
 Tel: 0208 467 0087  
 Email: info@chislehurstrotaryclub.org.uk  
 www.chislehurstrotaryclub.org.uk

**Chislehurst Trifol**

Meet 2nd Tuesday of each month  
 7.30pm-9.30pm  
 at Chislehurst Active Age Centre  
 85 High Street  
 Chislehurst  
 Contact: Mrs B A Hickey  
 Tel: 0208 467 9458  
 Email: barbarahickey@live.com

**RAFA Association**

Please contact RAFA Headquarters  
 for information  
 Tel: 0116 3605224

**Double-O-Five Chislehurst**

A social group for 45+ who are on their own.  
 Meet at Active Age Centre Hall  
 85 High Street  
 Chislehurst BR7 5AG  
 Meet every Wednesday evening.  
 Wide range of activities.  
 Contact: Mrs Ann Flower  
 Tel: 0208 7778679  
 Contact: Shirley Sayer  
 Tel: 0208 4642362

**WOMEN'S ORGANISATIONS**

**Chislehurst Afternoon Townswomen's Guild**  
 St Patrick's Hall  
 Albany Road, Chislehurst  
 Tel: 0208 4677288  
 Meet: 1st & 3rd Tuesdays of every month  
 at 2.30pm

**Time for a New Town  
 or Visitor Guide?**

**Town, Parish and Visitor Guides** are  
 welcomed by residents, tourists and  
 newcomers to your community

Professional and informative publications  
 that boost business for local traders



For further details and free samples contact:

Plan Publishing Services, Riverside House, Willemberg Road, Park,  
 Bromley Road, Willemberg, (London) East TN2 6JH

020 8461 6137

Email: sales@planpublishing.co.uk  
 www.planpublishing.co.uk

**JBS Groundworks  
 and Civil Engineers  
 of Chislehurst**

25 years experience  
**Industrial • Commercial • Domestic**

**Thames Water Approved • Sewer  
 Connections and Tap & Water Mains**

Fully trained to **CSCS & CPCS**  
 Standards

**Civil Engineering Contractors • Drainage  
 Foundations • Cable & Water Trenching  
 Site Clearances • Basement & Cellar  
 Conversion • Tenders Welcome**

**0208 295 1141**

**Mobile: 07831 757171**

Email: jbsgroundwork@btconnect.com

**JCB / Mini digger / mini dumper hire /  
 Machinery operators available**

3 Hollingdon Court, High Street, Chislehurst BR7 5AU

**YOUTH ORGANISATIONS***Girl Guides, Rangers,**Beavers & Rainbows***Chislehurst Girl Guiding**

Meet at Chislehurst Methodist Church

Further information is available from

Chislehurst division commissioner

Tel: 0208 4624665

**Scouts, Cubs & Beavers**[www.scouts.org.uk](http://www.scouts.org.uk)

Tel: 0845 300 1818

**5th Chislehurst Beavers, Cubs & Scouts**

Meet on a Thursday &amp; on a Friday for Scouts

For details contact: Dave Shoppard

Tel: 07876 686721

**To join a Scout Troop Contact:**

District Scout Leader Malcolm Fox

Tel: 07767242478

Email: [malfco@fox@ntlworld.com](mailto:malfco@fox@ntlworld.com)

Scouts are for Boys &amp; Girls

aged 10 to 14 years old

[www.chislehurstscouts.org.uk/join](http://www.chislehurstscouts.org.uk/join)**USEFUL CONTACTS****Citizens Advice Bureau**[www.citizensadvice.org.uk](http://www.citizensadvice.org.uk)**Police Station**

Non-Emergency Tel: 0300 123 1212

Emergency Tel: 999

**Bickley Safer Neighbourhood Team**

212 Widmore Road

Widmore Green, Bickley BR1 2RH

Tel: 0208 7212610

**Chislehurst Safer Neighbourhood Team**

1a High Street (Behind HSBC)

Chislehurst BR7 5AB

Tel: 0208 7212612

**Chislehurst Library****Fire Stations****Bromley Fire Station**

4 South Street, Bromley BR1 1RH

Tel: 020 8555 1200 ext 84539

Emergency Tel: 999

**Cropton Fire Station**

Avon Road, Cropton BR6 9AX

Tel: 020 8555 120 Ext 84543

Emergency Tel: 999

**Library****Chislehurst Library**

Red Hill, Chislehurst BR7 6DA

Tel: 0208 4671318

Email: [chislehurst.library@bromley.gov.uk](mailto:chislehurst.library@bromley.gov.uk)

Contact for details on groups held at the Library

**Taxi****National Rail Enquiries**

Tel: 08457 48 49 50

[www.nationalrail.co.uk](http://www.nationalrail.co.uk)**TaxiLine****Public Transport Information**

Tel: 0871 200 22 55

[www.taxiline.org.uk](http://www.taxiline.org.uk)

# JUST FASCIAS

**Kent and Surrey's  
Premier Fascia Company**

**We specialise in soffit,  
fascia, guttering,  
downpipes and  
cladding**

**Very competitive prices  
10 year guarantee**



**For a FREE  
Quotation**

**Telephone: 01233 714115**

**Mobile Telephone: 07801 977921**

**[www.justfascias.com](http://www.justfascias.com)**

6 Royal Parade  
Chislehurst  
Kent BR7 6NR  
020 8467 3347  
royalparade@yvesdelorme.co.uk

54 Duke of York Square  
London SW3 4LY  
020 7730 3435  
dukeofyork@yvesdelorme.co.uk

enq@yvesdelorme.co.uk  
www.yvesdelorme.com



Yves Delorme®

PARIS