



PLUS GROUP

# Epsom & Ewell Residents' Guide



2011–2012



MOT | Servicing | Diagnostics



**autotest**  
better service

242A Ruxley Lane  
West Ewell  
Epsom, Surrey  
KT9 9EY

Bosch  
accredited  
Service Centre



# MOTORING MAINTENANCE

made easy with Autotest

020 8974 1246

[www.autotest.co.uk](http://www.autotest.co.uk)

MOT Plus | Air Con Service |  
Tyres | Exhausts | Brakes |  
Batteries etc



RETAIL MOTOR  
INDUSTRY FEDERATION



# CONTENTS

◇ Introduction .....	5	◇
◇ A Short History .....	7	◇
◇ Education .....	11	◇
◇ Prominent People .....	12	◇
◇ Health .....	13	◇
◇ Sport & Leisure .....	14	◇
◇ Epsom & Ewell Map .....	16/17	◇
◇ Local Attractions .....	19	◇
◇ Six Things to Know .....	20	◇
◇ Listings .....	22	◇

Every effort has been made to ensure information and telephone numbers listed in this guide are accurate. Material has been researched from publicly available data and verified to the best of the publisher's abilities. The publishers, however, do not accept liability for any errors or omissions, or loss or damage, resulting therefrom.

Plus Publishing Services would like to acknowledge editorial and pictorial contributions by Bill Day

Copyright: Plus Publishing Services, Sycamore House, Willesborough Industrial Park, Kennington Road, Willesborough, Ashford, Kent TN24 0NR  
Tel: 01233 643574 • Fax: 01233 641816 • Email: admin@pluspublishing.co.uk • www.pluspublishing.co.uk

## Instepflooring

One of Surrey's  
largest selections  
of floor coverings



**Ambico**

**MARMOLEUM**



- Vinyls • Rubber Floors • Natural Floors & Rugs
- Timber Floors • Laminates • Carpets
- Cork • Professional Fitting Guaranteed

**020 8394 1110**

[www.instepflooring.co.uk](http://www.instepflooring.co.uk)

407 Kingston Rd, Ewell, Surrey

The UK's number one leisure centre  
as awarded by the Fitness Industry Association



# £1 MILLION INVESTMENT RAINBOW LEISURE CENTRE

## Facilities:

- » New Technogym equipment
- » Fully refurbished changing facilities
- » New Aerobiking studio
- » Thermal therapies and the latest beauty innovations
- » Over 50 spa treatments to choose from



Find out more at

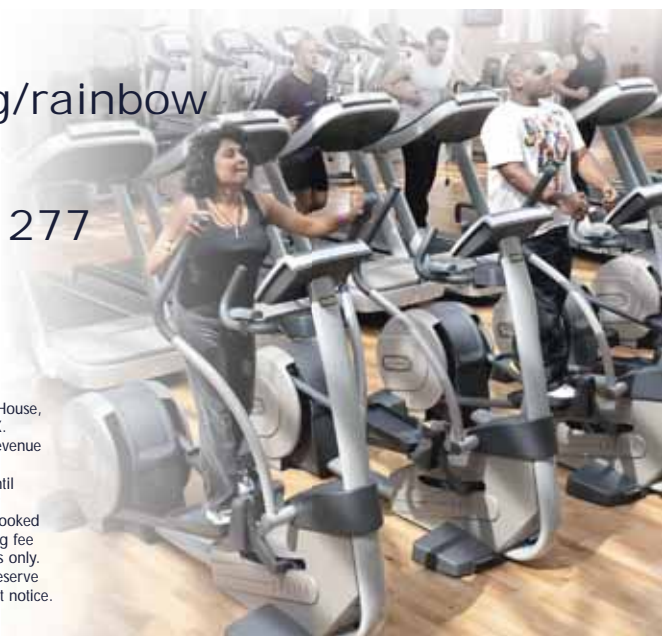
[www.gll.org/rainbow](http://www.gll.org/rainbow)

or call

01372 727 277

GLL Registered address: Middlegate House,  
The Royal Arsenal, London SE18 6SX.  
IPS Registered No. 27793R Inland Revenue  
Charity No. XR43398

\*Terms and Conditions: Offer valid until  
31 March 2012. 1 free day pass per  
person. Guests must complete a prebooked  
gym induction prior to use. No joining fee  
applies to prepaid adult memberships only.  
Offer is valid to non members. GLL reserve  
the right to withdraw the offer without notice.  
Subject to availability



Working in partnership



# INTRODUCTION

This guide is designed for those who live in Epsom & Ewell or who are planning to move to the area or visiting the area. It will acquaint people with what the towns have to offer.

This guide has been published since 2007 and is now in its 4th year of publication. Plus Publishing have been producing local guides for over 20 years.

In it you will find a wealth of local references, neatly gathered together in easy to find sections. It has a street map on the centre pages and a listings section at the back of the guide to help you find the telephone number of local schools etc.



Horton Park

It has been well supported by advertisers, who have recognised its value in reaching its customers and we would like to thank those who have advertised within the guide.

This guide is produced annually and distributed door to door to residents' within Epsom & Ewell by Royal Mail and bulk copies delivered to libraries, tourist information offices and estate agents where it is free to pick up.



*"The children show great enthusiasm and enjoyment for learning."*  
ISI 'Outstanding' Inspection Report

See our website for details of our next Open Mornings.

## Kingswood House School

IAPS Preparatory Day School for Boys 3-13 & Girls 3-7 Years

'The Smart Way Forward'

56 West Hill  
Epsom  
Surrey  
KT19 8LG  
01372 723590



[www.kingswoodhouse.org](http://www.kingswoodhouse.org)  
[admissions@kingswoodhouse.org](mailto:admissions@kingswoodhouse.org)

# THE ASHLEY CENTRE

## JOIN US ON FACEBOOK

Keep up to date with all the latest news, offers, giveaways and **FREE** family event info.

Just search for The Ashley Centre on Facebook!

Visit [www.theashleycentre.co.uk](http://www.theashleycentre.co.uk) for more information.



The  
Ashley Centre  
Epsom

Shop smarter. [Shop local](#)

[www.theashleycentre.co.uk](http://www.theashleycentre.co.uk)

# A SHORT HISTORY

## EPSOM – RACING TOWN WITH WINNING FORMULA

EPSOM makes a grand appearance in the Domesday Book as a fairly wealthy part of the region in those days. Its assets in 1066 were listed as 11 hides, 2 churches, 2 mills, 18 ploughs, 24 acres of meadow and woodland.

It had 38 households occupied by peasants, each grouped near St Martin's Church. Later, other small settlements developed at the town pond (now the High Street market) and at Epsom Court, Horton, Woodcote and Langley Vale.



Epsom Racecourse

The name Epsom derives from Ebbi's ham. Ebbi was a Saxon landowner. A relic of local life in the 7th century can be found in the British Museum where a brooch of that period is under lock and key.

One of the most imposing buildings of early times was Nonsuch Palace at Cuddington, a symbol of the power and grandeur of the Tudor dynasty. The building of Nonsuch was started by King Henry VIII in 1538. The building took three years, but external work took another five years to complete. The total cost of the building work was just under £25,000, which was substantially more than the cost of Hampton Court.

When King Henry died, the Earl of Arundel took possession in 1556, but royalty regained ownership 30 years later when Queen Elizabeth I held the deeds. Demolition of the castle took a lot less time than its erection. The building was reduced to rubble in 1682 by Baroness Nonsuch.

By the 17th century, Epsom became famous for its spa centre. The town's discovery of mineral springs made Epsom a mecca for people with ailments they believed could be cured by the hydrated magnesium sulphate. Epsom Salts was born around 1618 when the town became a resort.

The Dutch artist Willem Schellinks recorded his admiration of the health giving laxative on a visit in 1662 and a year later Samuel Pepys, the English diarist and naval administrator, recorded his examination of the wells in his noted diaries.

By 1730 Epsom had become an established racing town for the development of horse racing. It drew a widespread following from enthusiasts of the sport from those living in and around the capital. But it took another 50 years for the first Derby to be held in 1780, the race taking its name from the 12th Earl of Derby. By Victorian times the race had become an unofficial holiday for Londoners of all classes.

The popularity of Derby Day attracted the development of steam train travel from Croydon, introduced in 1847. Further lines were completed for travel to Epsom Downs in 1865 and Tattenham Corner in 1901.

The 1913 Derby was tagged the Suffragette Derby when it became the scene of dramatic protest by the suffragette movement. Sadly, the protest was to end in tragedy when the campaigning Emily Davison died after throwing herself in front of the galloping horses. Ironically, it was the King's horse

which trampled her to death that fateful day in Epsom history.

These days the Derby is known more for its festive, funfair type atmosphere than any other classic event in the British racing calendar. It draws vast crowds, many racing fans travelling by double and single deck buses chartered specially for the event, and others arriving at the two rail stations built specifically for the Derby.

No jockey had done more than Lester Piggott to weave his legendary status into the fabric of Derby history. He won the classic nine times and come second on four occasions. Among the greatest horses to run in the Derby have been Tulyar, Pinza, Sir Ivor, Nijinsky and Shergar, some of them enshrined in racing history when committed to canvas by the most eminent artists in the land.



**Epsom Playhouse**

British Prime Minister Lord Rosebery was sent down from Oxford University for buying a racehorse and entering it in the Derby. It came last. Paradoxically, the sobering embarrassment of university expulsion persuaded him to remain closely associated with the town for the rest of his life. He left land to the borough in his will, thus maintaining a family presence in Epsom history through his bequest of Rosebery Park and Rosebery School to the town. A house was named after him at Epsom College, a public school in the town.

The Epsom Board of Health was established in 1850 and in 1896 Epsom became an Urban District with surrounding areas forming part of Epsom Rural District Council.

The town's contribution for more than a century to the help of those suffering from mental health problems has given outstanding service to the region and set a benchmark for other hospitals to follow. Five such hospitals, known as the Epsom Cluster, offered this specialist psychiatric care for many years, Manor Hospital, built in 1899; St Ebba's Hospital (1902); Horton Hospital (1903); and Long Grove Hospital (1907), and West Park (1921) after emergency use as a military hospital from 1916 for those injured during the First World War.

Only one of the psychiatric hospitals, St Ebba's, remains. The hospitals were built on land at Horton Country Park, now the headquarters of the Horton Park Children's Farm.

Epsom's close association with Ewell was given legal significance in 1933 when the official administrative knot was tied between the two communities and finalised four years later with a charter deed proclaiming the creation of Epsom & Ewell.

Remarkably, the residents associations of Epsom and Ewell Borough Council have controlled the two communities for the past 70 years. Of the 38 council seats, the two associations have more than 20 seats, a demonstration of local trust in the principles and good governance of these representatives by local voters.

The official census of 1981 confirmed a population of 69,000 – today it is only 72,700 – and the need for an improved shopping centre. The Ashley Centre shop mall and Spread Eagle Walk arcade were opened.

In 1984, Epsom Playhouse opened. It celebrated its 25th anniversary in 2009. Seating some 450 in the main auditorium, the playhouse has hosted some major productions, attracting some of the best celebrity performers in the land, including Brian Rix, later Lord Rix, Lenny Henry, Harry Hill, Jo Brand, the Glenn Miller Orchestra, and the late Dame Cleo Laine. The annual Film Festival, run every summer, has become a key event in the Playhouse calendar.

A large multiplex Odeon cinema sprung-up in Upper High Street and the Ebbisham Centre opened in the 1990s, containing a doctor's surgery, public library, cafe and health and fitness centre. Later, Derby square was expanded to include a number of franchise businesses, including pubs and bars.

The University of Creative Arts runs Epsom's Laine Theatre Arts, an independent performing arts college based in the town, with Victoria Beckham numbered among its most prominent students.

Today, Epsom is a thriving commuter town with a reputation for excellence in most things. The borough was named the UK's "Best Place to Live" in 2005 by Channel Four's "Location, Location, Location" programme.

Nothing has done more to preserve Epsom's love of the past and hope for the future as a prosperous town than Surrey County Council's decision to give Epsom & Ewell Borough Council a 125 lease on Nonsuch Park.

In 1959, excavation uncovered the foundations of Nonsuch Palace and its banqueting hall, proof at last that the history of the old palace was not the product of myth and imagination.



**T Brown at home**  
Your home-heating experts

T Brown at home offers:

- 5 year warranty on selected boilers
- No call out charge for boiler repairs
- Comprehensive safety inspections
- Landlord gas certificates
- 24 hour call out service
- Replace your boiler from just £1400
- 1 year heating maintenance cover
- Free quotation for further work if required

Check a trade  
I am a member of the Gas Safe Register

Call now on **020 8786 1333**  
or visit [www.tbrownheating.co.uk](http://www.tbrownheating.co.uk)

High quality, local, reliable & competitive



**Cherry Childcare**  
Dell Lane, Stoneleigh  
also at Long Grove Park, Epsom

**Childcare You can Depend on**  
Better Staffed - Better Trained - Better Facilities

Open Weekdays  
7.30am - 6.15pm  
Full or Part Day  
Care & Education for Children  
Excellent Educational Program  
Healthy, Home Cooked Menus

**Special Offer**  
Save **£500**  
on 3 Months Fees

To find out more  
**Tel: 020 8786 8006**  
[www.cherrychildcare.co.uk](http://www.cherrychildcare.co.uk)



## **The Old House, Epsom Road, Ewell**

Offers warm & friendly sheltered accommodation, companionship, comfort & home cooked meals for ten active older people. Our live-in Housekeeper & Volunteers ensure that our high standards are maintained.

**We also have two comfortable houses at  
82 Mulgrave Road, Sutton & 82 York Road, Cheam**

**Interested in becoming a Resident or a Volunteer?  
Please contact Margaret Angus on 020 8394 0050  
or email [admin@nonsuchabbeyfield.org](mailto:admin@nonsuchabbeyfield.org)**

[www.NonsuchAbbeyfield.org](http://www.NonsuchAbbeyfield.org)  
I&PS 21620R An exempt Charity. H2118

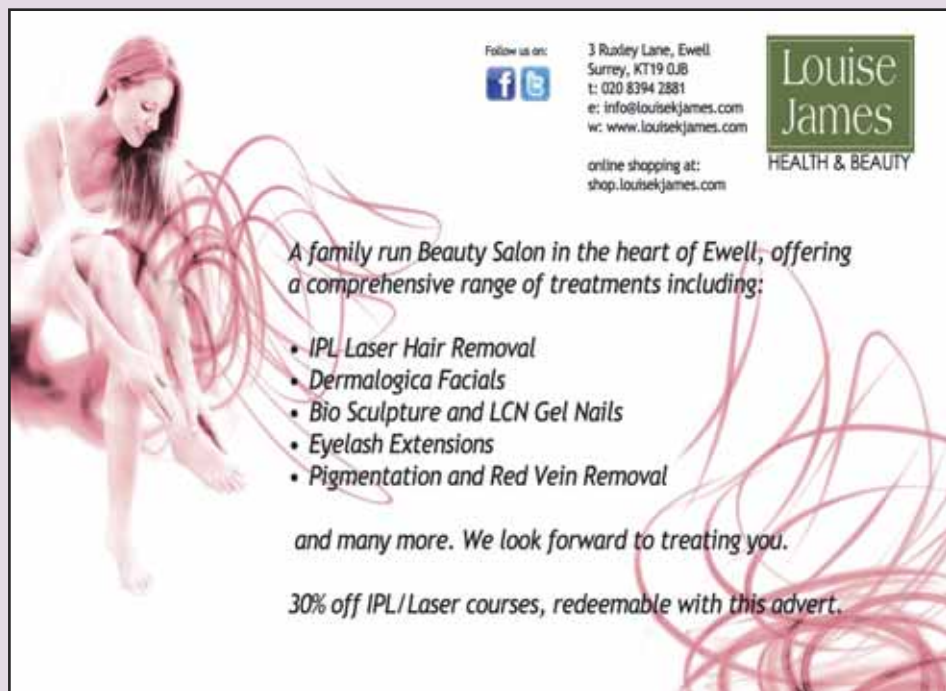
# EDUCATION

**EPSOM COLLEGE** has a distinguished place among leading independent schools offering both boarding and day education for boys and girls aged 13-18.



The college had delivered first class education for more than 150 years. But it completed 2011 with the promise of an exciting future. The college is set to open a sister college in the Far East to be called Epsom College in Malaysia.

The project was given a Royal blessing towards the end of 2011 when it received a visit from the Duke of York. Epsom College in Malaysia (ECiM) is due to open officially in 2013. The Duke was briefed on the project by ECiM headmaster Gareth Eynon when shown a model of the school buildings and playing fields at a special presentation ceremony in Kuala Lumpur.

Founded in 1853, the college in Epsom has a long standing association with medicine, estimated at having educated almost a third of the professionals entering the medicine profession in this country. The campus is situated on the edge of Epsom, near the Epsom Downs. Its former pupils include John Scarlett, head of the British Intelligence Service (MI6); Graham Sutherland (artist); Jeremy Vine, BBC TV journalist and radio presenter; Sir Anthony McCowan, Lord Justice of Appeal 1989-97; and Lt Cdr Dicky Kendall, who placed a two-ton mine under the German battleship Turpitz during the last War.



Follow us on:

3 Ruxley Lane, Ewell  
Surrey, KT19 0JB  
t: 020 8394 2881  
e: info@louisejames.com  
w: www.louisejames.com

online shopping at:  
shop.louisejames.com

**Louise James**  
HEALTH & BEAUTY

*A family run Beauty Salon in the heart of Ewell, offering a comprehensive range of treatments including:*

- IPL Laser Hair Removal
- Dermalogica Facials
- Bio Sculpture and LCN Gel Nails
- Eyelash Extensions
- Pigmentation and Red Vein Removal

*and many more. We look forward to treating you.*

*30% off IPL/Laser courses, redeemable with this advert.*

**Blenheim High School**, a secondary school based in Longmead Road, Epsom, welcomed a new head teacher at the beginning of 2012. The school is a co-educational, local authority school teaching pupils from the age of 11 to 18. There are more than 1,200 pupils on the school register with its compelling burgundy blazer worn by boy and girl students.

In 2004 Blenheim became a specialist school in science subjects. An Ofsted report carried out in 2007 described the school as good with “many outstanding features”. The school have four houses named after winners of the Epsom Derby – Nashwan, Octavius, Sinndar, Tulyar.

**Rosebery School for Girls**, based in White Horse Drive, Epsom, is a specialist maths and computing college. It has a lower school for the 11-16 age group; and a sixth form for pupils aged 16-18. The product of an amalgamation of Rosebery Grammar School and Epsom County School for Girls, entry is available only to the most academically gifted. It has a reputation for exam excellence with GCSE results of 80 per cent at A-C. Girls take an entry exam and are rated on location.

**Epsom and Ewell High School** is a mixed sex comprehensive for students aged 11-18. The head, Alex Russell, stresses the importance of the school's partnership with parents and the community. “We see to prepare our students for the challenge of the modern world” he says. The school is located in Ruxley Lane, Ewell.

**Glyn School**, Glyn is proud to be entering its 85th year serving the Epsom & Ewell community. Glyn is an ‘outstanding’ (Ofsted 2009, 2011) comprehensive school for boys with girls admitted to the Sixth Form. Glyn was granted Academy status in April 2011 Consistently oversubscribed, Glyn has a tradition of excellence in academic, sporting, artistic, dramatic and creative achievements as well as an enviable reputation for the quality of guidance and care via the student support structures offered to all of its students.

## PROMINENT PEOPLE

Trevor ‘Tosh’ Chamberlain, former Fulham footballer, lives in Ewell

Petula Clark, popular postwar British singer, born in Ewell.

Ron ‘Chopper’ Harris, former Chelsea footballer, lived in Ewell.

Jody Morris, former Chelsea, Leeds, and Millwall footballer, born in Epsom

Jimmy Page, of Led Zeppelin fame, lived in Epsom. Dad owned Page Motors garage

Lord Rosebery, former prime minister and Derby winner, lived at The Durdens, Chalk Lane, Epsom

Jeremy Vine, television newsman, born in Epsom.

Jimmy White, a snooker great, lived in Epsom.

Norman Wisdom, the British comedian, lived in Epsom for a time.

Kenneth Wolstenholme, legendary BBC television football commentator, lived in Epsom.

# HEALTH

**EPSOM HOSPITAL** runs one of the busiest accident and emergency units in the country. On average the department treats 120 casualties a day throughout the year. The hospital provides an extensive range of inpatient, day and outpatient services.

There is an extensive range of diagnostic and supporting services at Epsom, including pathology, radiology (CT, MRI, Ultrasound) and vascular diagnostic services. A modern, purpose-built day care centre and day surgery unit adds to the efficiency and attraction of this excellent hospital.



**New Epsom and Ewell Cottage Hospital**

Epsom and St Helier University Hospitals NHS Trust was formed in 1999. The organisation brought together four hospitals – Epsom, St Helier, Sutton and Queen Mary's Hospital for Children.

St Helier Hospital is the largest site within the Trust. The hospital has a comprehensive range of diagnostic facilities within pathology and radiology, a busy accident and emergency department dealing with 80,000 attendances a year, and a range of outpatient departments.

Queen Mary's Hospital for Children is a dedicated children's hospital as the name suggests. It shares the St Helier site.

Sutton Hospital includes a day surgery unit with dedicated theatre facilities and 32 beds. There are departments of lithotripsy (treating bladder stones), dermatology laser care, pain management and a large ophthalmology outpatient service.

In 2009 the Trust launched plans to develop a vision for the future of Epsom Hospital. The project team has met with a wide range of patient representatives, local councillors, local charities, and other stakeholders. The Trust recognises the uncertainty for development programmes at a time of economic strife but it declares the hospital's future, and its services safe, including the greatly valued A&E and maternity units.

## Think Gardeners

- Residential & Commercial Gardeners
- Regular Maintenance • Landscaping
- Turfing, Fencing, Hedges & Lawns
- Fully Insured
- Free Quotes

**Contact 01372 236350**  
**07738641994**

**[www.thinkgardeners.com](http://www.thinkgardeners.com)**



## The King Clinic

Back Care & Integrated Health

- Osteopathy
- Physiotherapy
- Acupuncture
- Chiropody

Nell Gwynne House (1st floor)  
119-121 High Street, Epsom, Surrey KT19 8DT

Tel: 01372 743333  
[www.thekingclinic.co.uk](http://www.thekingclinic.co.uk)

# SPORT & LEISURE

**LONDON OLYMPIC** fever is guaranteed to sweep through Surrey as it is through every other county in the country in 2012. Eleven towns and villages will be on the route of the Olympic torch relay as it heads through the county.

Epsom and Ewell are not on the scheduled route but residents will have every opportunity to sample the excitement when the flame passes through the area. The torch will pass within 10 miles of almost everyone in the county.

The borough council has instituted an annual sports awards for Epsom and Ewell. The various categories include sports personality; volunteer of the year; sports club of the year; disability award; team of the year; coach of the year and other sections.

The inaugural holder of the 2011 Sports Personality of the Year was Alexandra Rickham. All winners are automatically entered into the Surrey Sports Awards.

**Epsom and Ewell Football Club** plays in the Combined Counties Football League. In 2010 the club terminated its ground share arrangement with Banstead and began a similar arrangement with Merstham FC. The new ground for this very old football club is at Weldon Way, Merstham. In 2009-10 the club reached the last 32 of the FA Vase for the first time in more than 20 years. The club runs a reserve team and youth section. Junior players welcome to join the club.

Other football teams in the area include:- Epsom Eagles, AFC Ewell, Epsom and Ewell Youth Football League, Epsom Eagles, Beecholme Belles FC, Christchurch United, and Stoneleigh Athletic.

**Horton Park Golf Club** is located in the gloriously peaceful Horton Country Park. The club has two courses, the 18-hole Millennium course covering some 6,000 yards; and the nine-hole Academy course, which is said to demand the use of every club in the bag.

The 26-bay driving range is popular and supported by swing analysis cameras for those wishing to take advantage of the combined wisdom of a team of professionals. Two function rooms accommodating 100 people are well supported. The club is part of the Maple Leaf Golf Group.

**Epsom Golf Club**, founded in 1889, attracts some of the world's finest players. Tiger Woods has played the course and the legendary Harry Vardon once put on an exhibition match here. Located in Longdown Lane South, Epsom, the clubhouse is a magnificent shrine to a club steeped in history. The course is tough and testing. Golfers need a full repertoire of shots to achieve a decent round. The club hosts one of the biggest Pro-Am events in the south annually.

**Epsom Cricket Club** play in the Ryman Surrey Championship league at the Francis Schadhorst Memorial Ground, Woodcote Road, Epsom. The club runs four senior teams; a women's section; and junior development teams. As club officials say, they offer a warm welcome to players aged 6-60. The club has taken possession of a new electronic scoreboard.

**Sutton and Epsom Rugby Club**, one of the oldest rugby clubs in the country, play at Cuddington Court, Rugby Lane, Cheam. Rugby is available to both genders of all ages. Membership is from under-5 to veteran status. RFU qualified coaches provide quality tuition. The club runs no fewer than 25 teams. It has a membership roll of 1,200 current and former playing members. There are almost 2,000 social members. The club guarantees a warm welcome for new members.

**Epsom Poole Road Recreation Ground** is an oasis of sporting opportunity for anyone keen on sport. Activities held here range from aerobics, martial arts, children's play sessions, football, tennis, basketball, and most important of all, the rec is the home of Epsom and Ewell Harriers, one of the oldest athletics clubs in Surrey and one of the most successful in the UK.

Many of the track and field athletes who have honed their talents at this venue have gone on to represent Britain in athletics events at home and overseas. It has a membership of more than 250 offering competition in the Southern & Rosenhiam leagues. The club also enters competitors in the Surrey Cross Country leagues and the Area Cross Country Championships.

**Epsom Hockey Club** is located in Woodcote Road. One of the largest clubs in the county, Epsom HC fields eight men's and six women's teams. There are mixed teams and junior teams also.

The junior section thrives on a membership of 200-plus, aged six upwards. New members welcome with attractive financial incentives for those joining the club.

**Epsom Lawn Tennis Club** runs summer holiday camps and autumn coaching programmes at its headquarters in Woodcote Road, Epsom. The club nurtures all levels and ages of tennis in a professional and family atmosphere.

**Ebbisham Sports Club**, Eastway, Epsom has a tennis and rackets section. Tennis can be played throughout the year on the club's all-weather surfaces. Adult, student, off-peak, junior, beginners, and intermediate memberships are available.

**Rainbow Leisure Centre**, built in 2003, is located in East Street, Epsom. Funded by the council, the centre is used by all age groups. It has a main sports hall, 25metre six-lane swimming pool, a superbly equipped 140-station gym and an indoor bowling hall. The facilities are available on a pay and play basis, or by membership subscription. Reduced rates are available. Wellness members pay a monthly fee for unlimited use of selected facilities. There are two large dance studios; sauna, steam and spa facilities; and creche. Bowls is available in a two rink hall maintained to EBA standards.

**The Ebbisham Centre**, Derby Square, Epsom, is well worth a day out. The centre has a library, medical practice, café, pilates studio and a variety of bars and restaurants. The centre provides a wide range of community facilities designed to foster health and well-being. There is a health and fitness facility as good as any in the region.

03337 003 676

**Clearit**  
clearance solutions

MARTIN SMITHERS

T 07757 033 676 *We clear away anything*  
E martin@clear-it.biz No jobs too small  
[www.houseclearancepsom.co.uk](http://www.houseclearancepsom.co.uk) FREE ESTIMATES  
[www.anyrubbishremoval.co.uk](http://www.anyrubbishremoval.co.uk)

**MAN AND VAN**

RUBBISH • DOMESTIC • HOME • GARDEN • OFFICE  
WAREHOUSE • INDUSTRIAL • SHOP • MACHINERY

*Unbeatable prices*



**MARK ADAMS**  
decorating & property maintenance

---

Painting  
Wall Coverings  
Coving  
Fully Insured  
Established 26 Years

**COMPETITIVE RATES**

---

e: mark.adams555@ntlworld.com  
t/f: 020 8786 8880 m: 07973 293795  
77 Seaforth Gardens, Epsom, Surrey KT19 0LP

Please note: The map shown is a guideline only and will not show every road or street in the town



# EPSOM

Council Building

St Ebba's Hospital

Horton Hospital

Blenheim High School

Stamford Green County Prim Sch.

Kingswood House Sch.

Ebbisham Sports Club

Business Cen.

Council Building

Surrey Institute of Art & Design

Rainbow Leisure Centre

Epsom Stn.

Town Hall

Police Stn.

St Josephs Catholic Primary School

Infants School

Rosebery School

Epsom General Hospital

University for the Creative Arts

St Martins CE Junior School



# Ewell

 Ewell East Station

North East Surrey College of Technology

Wallace Fields Junior Sch.

Wallace Fields Infant Sch.

The Old Cottage Hospital

Epsom Downs Station 

Reproduced by permission of Ordnance Survey on behalf of The Controller of Her Majesty's Stationery Office. © Crown Copyright 100041368

LEATHERHEAD • ASHTEAD • EPSOM

A SCHOOL FOR CHILDREN WHO ENJOY LIFE



**DOWNSEND**  
SCHOOL

**'Come and See What Makes us so Special'**

Downsend is a co-educational, day preparatory school providing excellent education and a wealth of opportunity for children to develop their individual skills. We introduce them to the important world of learning in the happy, caring and supportive environment of our three Nursery & Pre-Preparatory Lodges.

We believe that happy children thrive in a welcoming, nurturing and stimulating environment. Our Lodges provide two pre-school nursery years, with an enhanced afternoon programme and excellent pupil ratios; preparing them for a happy and successful progression on to our Pre-Preparatory and Preparatory School years.

Epsom Lodge - just 5 minutes from the High Street.



Epsom Lodge, 6 Norman Ave,  
Epsom KT17 3AB.

**You are always welcome to visit at any time for a personal tour. We also hold Open Days at regular intervals. Call 01372 372311 or visit [www.downsend.co.uk](http://www.downsend.co.uk) for more information.**

Independent Day Education for Girls & Boys Aged 2 - 13

# LOCAL ATTRACTIONS

**Auriol Park** Located in Salisbury Road, Ewell, the park is used for walking, running, a variety of sports and recreation.

**Brooklands Museum**, the world's first purpose-built motor racing circuit, is recognised as the birthplace of British motor sport and aviation. As a dedicated education centre, it attracts almost 10,000 schoolchildren every year. Open all year, except the Christmas period, it was designed as an oval circuit with steeply banked curves. It was also useful to the British motor industry for the testing of cars. Motor racing continued here until 1939. Today it is the home of Concorde and the site of many engineering and technological achievements.

**Epsom Downs Racecourse**, right on the doorstep, is the home of the famous Derby and Oaks classics. Formal top hat and tails essential for entry to the Queen's Stand but there is an enclosure to suit all pockets and tastes. Visit the world famous Tattenham Corner. The racecourse is a few minutes from the town centre.

**Guildford Cathedral** is an imposing landmark on Stag Hill. It is situated on land where once the Kings of England hunted. The interior is exceptional. The cathedral has a reputation for providing excellent music for large audiences.

**Horton Country Park** is a haven for those seeking outward bound pleasure. Situated in Epsom, the nature reserve covers 400 acres. It can be reached from many access points, including a main car park off Horton Lane. Walking, cycling, and horse riding are encouraged. Dog walking is also welcome providing owners keep their animals under control. The park includes a golf course, farm, and equestrian centre. Open all the year, the maze of paths and tracks through delightful Surrey countryside are used by pedestrians, horse riders and cyclists. Facilities include nature watching hides, kite flying, orienteering, fruit picking, and polo. Horton Park Children's Farm is a family attraction giving visitors an opportunity to inspect common and rare farm animals at close quarters. A large adventure playground, cafe and shop increase the pleasure of a visit. The Equus equestrian centre offers livery, pony trekking and polo. Horton Park dates back to medieval times. The council runs an annual history walk around the site. It takes roughly three hours but is well worth supporting.

**Mounthill Gardens** is one of Epsom's most popular venues for those taking a casual walk. Rest and relaxation is the order of the day for visitors to this haven on the edge of Epsom Common.

**Sandown Racecourse**, one of Britain's finest racecourses, offers first class flat and National Hunt racing. Viewing is excellent. Transport links to this famous racecourse in Esher are excellent.

**Nonsuch Park**, has a vast network of paths winding through its grassland and trees. There are different species of flowers, plus all manner of wildlife. Nonsuch Mansion is situated in the centre of the park. The ground floor rooms have been refurbished. Available for weddings and special parties. The café, known as the 'Nonsuch Pantry', re-opened in 2011. Public toilet near the café.

# SIX THINGS TO KNOW

- 1 Epsom Common was awarded the prestigious Green Flag for 5th consecutive year in 2011.
- 2 The Bourne Hall Museum is putting local history texts from exhibitions on the internet.
- 3 Epsom racecourse is a venue for weddings.
- 4 Epsom Playhouse is a 400-seat theatre for opera, dance, drama, comedy, and pantomime.
- 5 The clock tower in Epsom centre was built in 1847.
- 6 The Epsom tip or dump is located in Blenheim Road.



Epsom Clock Tower

1/2 Price MOT When Booking  
A Full Service



ALL MAKES & MODELS  
FREE PICK UP AND DELIVERY  
FREE COURTESY CARS  
GENERAL REPAIRS

DIESEL REPAIRS  
ENGINE DIAGNOSTICS  
FUEL INJECTION SYSTEMS  
FRIENDLY ADVICE

01372 748 374  
www.epsomcarcare.com  
19a Blenheim Road, Longmead  
Business Park, Epsom KT19 9AP





Active in the community

## For Savings and Mortgages contact your local building society

For over 100 years National Counties Building Society has been providing savings and mortgage facilities to customers throughout the United Kingdom.

From its Church Street, Epsom headquarters, the Society provides a first class professional service to over 50,000 customers. A branch in Ashley Square, part of Epsom's busy Shopping Centre, provides added convenience for customers living and working locally.

To find out more about National Counties or for information on the products & services offered please contact us on 01372 747771.



**Call into our branch** Ashley Square, Epsom, Surrey KT18 5DD  
**Work times** Weds–Fri 8.00am–4.30pm  
**Visit us at** [www.ncbs.co.uk](http://www.ncbs.co.uk)

Authorised and regulated by the Financial Services Authority

# LISTINGS

## PLACES OF WORSHIP

### All Saints Church

Church Road, West Ewell, Epsom  
Tel: 020 8393 7273  
[www.allsaintswestewell.org.uk](http://www.allsaintswestewell.org.uk)

### Christ Church Epsom Common

Christ Church Road, Epsom  
KT19 8NE Tel: 01372 743133  
Email: [christchurch.parishoffice@btinternet.com](mailto:christchurch.parishoffice@btinternet.com)

### Christian Fellowship

22 West Hill, Epsom KT19 8JD  
Tel: 01372 810926

### Epsom Baptist Church Centre

6 Church Street, Epsom  
KT17 4NY Rev. Colin Holmes  
Tel: 07821 691770  
Email: [colin.ebcc@virgin.net](mailto:colin.ebcc@virgin.net)  
[www.epsonchurch.co.uk](http://www.epsonchurch.co.uk)

### Epsom Methodist Church

Ashley Road, Epsom KT18 5AQ  
Tel: 01372 728535  
[www.emc.org.uk](http://www.emc.org.uk)

### Epsom United Reformed Church

Church Street, Epsom KT17 4PW  
[www.epsonurc.org.uk](http://www.epsonurc.org.uk)

### Generation Church

#### Generation Resource Centre

Ruxley Lane, West Ewell  
KT19 0JG Tel: 020 8786 8221  
[www.generation.org.uk](http://www.generation.org.uk)

### Grace Baptist Church

32 Dorking Road, Epsom  
KT18 7NH Tel: 01372 728826  
Email: [brian.moody1@ntworld.com](mailto:brian.moody1@ntworld.com)  
[www.gbce.org.uk](http://www.gbce.org.uk)

### The King's Church

Longmead Road, Epsom KT19 9BU  
Tel: 020 8786 7998  
[www.the kings church.org](http://www.the kings church.org)

### Religious Society of Friends

(Quakers)  
30 St Martin's Avenue  
Epsom KT18 5HS  
Tel: 01372 724906

### Ruxley Church

Ruxley Lane, West Ewell, Epsom  
Tel: 0208 391 1127  
[www.ruxley-church.org.uk](http://www.ruxley-church.org.uk)

### Christ Church Ewell

Cheam Road, Ewell KT17 1AD  
Tel: 020 8642 5822  
Email: [info@christchurchewell.com](mailto:info@christchurchewell.com)  
[www.christchurchewell.com](http://www.christchurchewell.com)

### Stoneleigh Baptist Church

The Glade, Stoneleigh  
Epsom KT17 2HL  
Tel: 020 8393 3012  
Email: [office@stonechurch.co.uk](mailto:office@stonechurch.co.uk)  
[www.stonechurch.co.uk](http://www.stonechurch.co.uk)

### Stoneleigh Methodist Church

1 Stoneleigh Crescent, Stoneleigh  
Epsom KT19 0RT  
Rev. Dr. Martine Stermerick  
Tel: 020 8393 2322  
[www.stoneleighmethodist.org.uk](http://www.stoneleighmethodist.org.uk)

### St Barnabas Church

Temple Road, Epsom  
KT19 8HA  
Tel: 01372 722874  
[E:stbarnabasepsomoffice@gmail.com](mailto:E:stbarnabasepsomoffice@gmail.com)

### St Clement's Church

The Presbytery  
307 Kingston Road  
Ewell KT19 0BW  
Tel: 020 8393 5572

### St John the Baptist Church

59 Stoneleigh Park Road  
Epsom KT19 0QU  
Tel: 020 8393 3738

### St Joseph's Church

St Margaret Drive  
Epsom KT18 7JQ  
Tel: 01372 723573  
[www.st-josephs-epsom.org.uk](http://www.st-josephs-epsom.org.uk)

### St Martin of Tours with St Stephen's on the Downs

Church House, Church Street  
Epsom KT17 4PX  
Tel: 01372 722567  
Email: [stmartinsepsom@btconnect.com](mailto:stmartinsepsom@btconnect.com)  
[www.stmartinsepsom.org](http://www.stmartinsepsom.org)



Epsom Methodist Church

**St Mary the Virgin**

Cuddington  
The Avenue  
Worcester Park  
Epsom KT4 7HL  
Tel: 020 8337 4026  
www.cuddingtonparish.org.uk

**St Mary the Virgin**

(Ewell Parish Church)  
Ewell Village KT17 2BB  
Tel: 020 8393 2643  
www.stmarysewell.com

**St Michaels Church the Sanctuary**

4a Church Street, Ewell Village  
KT17 2AS  
Tel: 0208 393 4881  
www.stmichaelsthesanctuary.net

**West Ewell Evangelical Church**

Lansdowne Road, Ewell KT19 9QJ  
Tel: 020 8394 0659  
Email: robin.calcutt@weec.org.uk  
www.weec.org.uk

**HEALTH**

**NHS Direct**  
Tel: 0845 46 47  
www.nhsdirect.nhs.uk

**Hospitals**

**Epsom Hospital**  
Dorking Road, Epsom KT18 7EG  
Tel: 01372 735735  
www.epsom-sthelier.nhs.uk

**The Northey Suite**

Epsom General Hospital  
Dorking Road, Epsom KT18 7EG  
Tel: 01372 735000

**Doctors**

**Ashley Centre Surgery**  
Ashley Square, Epsom KT18 5DD  
Tel: 01372 722707/723668

**Cox Lane Surgery**

Cox Lane, West Ewell KT19 9PS  
Tel: 020 8391 4859

**Fitznells Manor Surgery**

2 Chessington Road,  
Epsom KT17 1TF  
Tel: 0844 412 2232

**Spring Street Surgery**

Bourne Hall Health Centre  
Chessington Road, Ewell  
KT17 1TG Tel: 020 8394 1362

**Stoneleigh Medical Centre**

24 Stoneleigh Broadway  
Epsom KT17 2HU  
Tel: 020 8786 7744

**Stoneleigh Surgery**

20 Glenwood Road, Stoneleigh  
Epsom KT17 2LZ  
Tel: 020 8393 6051

**Dentists**

Clocktower Dental Practice  
88 High Street, Epsom KT19 8BJ  
Tel: 01372 720136  
www.clocktowerdental.com



THE VALE  
PRIMARY SCHOOL

**THE VALE PRIMARY SCHOOL**

Great importance is placed on children achieving high standards, allowing their potential to be fully realised across all areas of learning. Overall attainment has been significantly above the National Average for the last three years.

Through a supportive and caring atmosphere the children are highly motivated, and have a positive attitude to their work and others.

The 'Vale Values' underpin our school ethos.

Breakfast and After School Club available.

Beaconsfield Road, Langley Vale, Epsom, Surrey. KT18 6HP

**Telephone: 01372 273639**

www.vale.surrey.sch.uk

Email: info@vale.surrey.sch.uk

Co-Head Teachers: Mrs Claire Regnard and Mrs Carrie Christer



"Teachers are caring and understanding." *Joseph*



"If something is hard the teachers make it easier to understand." *Megan*

*Where every child is known, valued and nurtured.*



**Epsom  
Coaches**

*With you every step of the way*



Est. 1920

unique door-to-door service.

## The finest coaching holidays

It is our aim to provide the finest coaching holidays. We stay at top hotels, operate the best vehicles, use knowledgeable and caring tour managers.



### The Best of Britain

We explore the whole of Great Britain, from the Isles of Scilly to the Orkney's. Our Tour Guides are on hand show you all our wonderful Islands have to offer, we discover stunning scenery, pleasant towns and villages, exciting cities and our fascinating history.



### Explore Europe

Discover the very best of Europe by land, sea, air and high speed train.

We visit Ireland, Jersey, France, Holland, Germany, Switzerland, Austria, Italy, and Spain.

**Epsom Coaches, Roy Richmond Way, Epsom,  
Surrey, KT19 9AF 01372 731705  
[www.epsomcoaches.com](http://www.epsomcoaches.com)**

Epsom Coaches, going the extra mile.

**Epsom Dental Centre**

37 Waterloo Road,  
Epsom KT19 8EX  
Tel: 01372 720650

**Epsom Orthodontic**

1 Church Street,  
Epsom KT17 4PF  
Tel: 01372 749040  
www.epsomortho.co.uk

**Alexandra Dental Practice**

43 Alexandra Road, Epsom  
KT17 4DB Tel: 01372 722685

**Howell Hill Dental Practice**

Dellcote, Cheam Road  
Epsom KT17 3EL  
Tel: 020 8224 5105  
Email: info@howellhill.co.uk

**Epsom Dental Care**

39 Dorking Road, Epsom  
KT18 7JR Tel: 01372 723724

**The Parade Dental Practice**

177 Kingston Road,  
Ewell KT19 0AA  
Tel: 020 8393 1337

**The Quadrant**

9 Upper High Street, Epsom  
KT17 4QY Tel: 01372 723734

**EDUCATION**

**Nurseries & Pre-Schools**

**Epsom Day Nursery**

(Part of the Asquith Family)  
28 Worple Road, Epsom  
KT18 5EH  
Tel: 01372 723332  
E: epsom@asquithnurseries.co.uk

**Cherry Child Care - Cherryfield  
Nursery**

Long Grove Park, Long Grove Road,  
Epsom KT19 8TF  
Tel: 01372 747080  
www.cherrychildcare.co.uk

**Cherrystone Nursery**

1 Dell Lane, Stoneleigh  
KT17 2NE  
Contact: Emma Miller  
Tel: 020 8786 8006

**Cunliffe Day Nursery**

Cunliffe House,  
Cunliffe Road  
Epsom KT19 0RL  
Tel: 020 8786 8921

**Downsend School – Epsom Lodge**

6 Norman Avenue, Epsom  
KT17 3AB Tel: 01372 385438  
www.downsend.co.uk

**Little Hands Nursery**

Christchurch Scout HQ  
Christchurch Road  
Epsom KT19 8NE  
Tel: 07838197790  
Email: littlehandsnurseryepsom@gmail.com



*Play the Academy course as much as you like for just £125 a year.  
Buy your 'Privilege Card' today!*

**£5.00 off with this voucher**

**0208 393 8400**

Horton Park Golf Club, Hook Road,  
Epsom, Surrey KT19 8QG

**SIMON SMITH  
FLOWERS**



Unit C & D North Mall,  
Ashley Centre,  
Epsom,  
Surrey KT18 7LX

Telephone: 01372 725 725

**OPENING TIMES**  
Monday to Saturday:  
9.00am to 5.30pm  
Sunday: Closed

**www.simonsmithflowers.com**  
info@simonsmithflowers.com

Our mission statement '**Danetree is a caring school where learning is creative, challenging and inspiring; enabling all to achieve their potential**' is evident throughout our school – from our stimulating learning environment through to the range of opportunities for children to enjoy and succeed at school.

- Over-subscribed in September 2011, Danetree is flourishing as part of the Glyn Danetree Partnership.
- Achievements over the last year have included the National Healthy Schools Award, Epsom & Ewell Sports Team of the Year, District Sports winners' and Investors in People Bronze Award.

Danetree Junior School Danetree Road, Surrey KT19 9SE  
0208 393 6406 [www.danetree.surrey.sch.uk](http://www.danetree.surrey.sch.uk)



**Glyn School**  
The Kingsway  
Ewell  
Surrey  
KT17 1NB

Glyn is proud to be entering its 85th year serving the Epsom & Ewell community.  
Glyn is an 'outstanding' (Ofsted 2009, 2011) comprehensive school for boys  
with girls admitted to the Sixth Form.  
Glyn was granted Academy status in April 2011

Consistently oversubscribed, Glyn has a tradition of excellence in academic, sporting, artistic,  
dramatic and creative achievements as well as an enviable reputation for the  
quality of guidance and care via the student support structures offered to all of its students.

[www.glyn.surrey.sch.uk](http://www.glyn.surrey.sch.uk)  
020 8716 4949

**Bright Horizons – Teddies Nurseries**

St Johns Chandlers Hall  
Church Road, Epsom KT17 4AB  
Tel: 01372 743474

**Treetops Nursery**

12 The Parade, Epsom KT18 5DH  
Tel: 01372 745905  
Email: epsom@treetopsnurseries.co.uk  
www.treetops.co.uk

**Primary Schools**

**Auriol Junior School**

Vale Road, Stoneleigh  
Epsom KT19 0PJ  
Tel: 020 8393 4721  
Email: info@auriol.surrey.sch.uk  
www.auriol.surrey.sch.uk

**Danetree Junior School**

Danetree Road, West Ewell  
KT19 9SE Tel: 020 8393 6406  
Email: info@danetree.surrey.sch.uk  
www.danetree.surrey.sch.uk



Rosebery School

**Epsom Primary School**

Pound Lane, Epsom KT19 8SD  
Tel: 01372 720608  
Email: office@epsom.surrey.sch.uk  
www.epsomprimaryschool.co.uk

**Ewell Grove Infants & Nursery School**

West Street  
Ewell KT17 1UZ  
Tel: 020 8393 4393  
www.ewell-grove.surrey.sch.uk

**The Mead Infant School**

Newbury Gardens, Ewell  
KT19 0QG Tel: 020 8393 0966  
Email: office@mead.surrey.sch.uk  
www.mead.surrey.sch.uk

**Epsom Downs Primary School & Children's Centre**

St Leonard's Road, Epsom Downs  
KT18 5RJ  
Tel: 01737 354313  
www.epsomdowns.surrey.sch.uk

**Meadow Primary School**

Sparrow Farm Road, Stoneleigh  
Epsom KT17 2LW  
Tel: 020 8393 4839  
www.meadow.surrey.sch.uk

**Riverview C of E Primary School**

Riverview Road  
West Ewell KT19 0JP  
Tel: 020 8337 1245  
www.riverview.surrey.sch.uk



THE PHILLOMENA  
SCHOOL OF DANCE  
& THE PINK LADIES  
CHEERLEADERS

BALLET, TAP, THEATRE CRAFT,  
FREESTYLE/STREET  
& CHEERLEADING

Classes held in local area

All enquiries please to the principal:

LYNDA BLYTH-PHILLIPS

01342 892 806

www.phillomenadanceschool.co.uk  
lynda@phillomenaschoolofdance.co.uk

**Surrey Cars**  
All Waste, Scrap, Recycling, Insurance, AS, MOT, ZPL

**Reliable 24 hrs Service**  
**01372 747 747**  
**01372 747 737**

**Affordable Transfers**  
**Executive, Local Runs**  
**Airports, School Runs**

**Book On Line:**  
**surreycars.biz**

**Accounts & Corporate Welcome**



VISA MasterCard AMERICAN EXPRESS

**Shawley Community**

**Primary School**

Shawley Way, Tattenham Corner  
Epsom KT18 5PD  
Tel: 01737 350344  
www.shawley.surrey.sch.uk

**Southfield Park Primary School**

Long Grove Road, Epsom  
KT19 8TF Tel: 01372 743104  
Email: info@southfield-  
park.surrey.sch.uk

**Stamford Green Primary School**

Christ Church Mount, Epsom KT19  
8LU Tel: 01372 725383  
www.stamford-green.surrey.sch.uk

**St Clement's RC (Aided)**

**Primary School**

Fennells Mead, Chessington Road  
West Ewell KT17 1TX  
Tel: 0208 3938789  
www.stclements.surrey.sch.uk

**St Joseph's RC (Aided)**

**Primary School**

Rosebank West Street  
Epsom KT18 7RT  
Tel: 01372 727850

**St Martin's C of E (Aided)**

**Infant School**

Worple Road, Epsom KT18 7AA  
Tel: 01372 720337

**St Martin's C of E (Aided)**

**Junior School**

Ashley Road, Epsom KT18 7AD  
Tel: 01372 721996

**Wallace Fields Infant School**

Wallace Fields, Ewell KT17 3AS  
Tel: 020 8394 0647  
www.wfis.co.uk

**Wallace Fields Junior School**

Dorling Drive, Ewell KT17 3BH  
Tel: 020 8393 0350  
Email: office1@wallacefields-jun.  
surrey.sch.uk  
www.wallacefields-jun.surrey.sch.uk

**West Ewell Infant School**

**& Nursery**

Ruxley Lane, West Ewell KT19 0UY  
Tel: 020 8393 2417  
Email: head@west-ewell.surrey.  
sch.uk

**The Vale Primary School**

Beaconsfield Road, Langley Vale  
Epsom KT18 6HP  
Tel: 01372 273639  
Email: info@vale.surrey.sch.uk  
www.vale.surrey.sch.uk

**Secondary Schools & Colleges**

Blenheim High School  
Longmead Road, Epsom KT19 9BH  
Tel: 01372 745333  
Email: headteacher@  
blenheim.surrey.sch.uk  
www.blenheim.surrey.sch.uk

**Epsom & Ewell High School**

Ruxley Lane, West Ewell KT19 9JW  
Tel: 020 8974 0400  
Email: info@eehs.surrey.sch.uk  
www.epsomandewellhighschool.com

**Glyn School**

The Kingsway, Ewell KT17 1NB  
Tel: 020 8716 4949  
Email: glynmail@glyn.surrey.sch.uk  
www.glyn.surrey.sch.uk

**Rosebery School**

White Horse Drive, Epsom  
KT18 7NQ  
Tel: 01372 720439  
Email: info@rosebery.surrey.sch.uk  
www.rosebery.surrey.sch.uk

**The Sycamore Centre**

14 West Hill, Epsom  
KT19 8HR  
Tel: 01372 722939

**Independent Schools**

**Epsom College**

College Road, Epsom KT17 4JQ  
Tel: 01372 821000  
Email: info@epsomcollege.org.uk  
www.epsomcollege.org.uk

**Ewell Castle School**

Church Street, Epsom  
KT17 2AW  
Tel: 020 8393 1413  
www.ewellcastle.co.uk

**Kingswood House School**

56 West Hill, Epsom KT19 8LG  
Tel: 01372 723590  
Email: office@kingswoodhouse.org  
www.kingswoodhouse.org

**St Christopher's School**

6 Downs Road, Epsom  
KT18 5HE  
Tel: 01372 721807  
E: office@st-christophers.surrey.sch.uk  
www.st-christophers.surrey.sch.uk

**LOCAL GOVERNMENT**

**Epsom & Ewell Borough Council**

Town Hall, The Parade  
Epsom KT18 5BY  
Tel: 01372 732000  
E: contactus@epsom-ewell.gov.uk  
www.epsom-ewell.gov.uk

**CHARITABLE & VOLUNTARY ORGANISATIONS**

**Abbeyfield Ewell Society Ltd**

Tel: 020 8393 0881  
Email: abbeyfieldewellsoc@  
btinternet.com

**Action for the Blind People**

Swail House, Ashley Road  
Epsom KT18 5AZ  
Tel: 01372 720742

**Age Concern Epsom & Ewell**

The Old Town Hall,  
The Parade, Epsom  
KT18 5AG  
Tel: 01372 732456  
www.ageconcernepsom.org.uk

**Alzheimer's Society**

The Meadows Day Hospital  
West Park, Horton Lane  
Epsom KT19 8PB  
Tel: 01372 729988  
www.alzheimers.org.uk

**The Childrens Trust Shop**

55 The Broadway,  
Stoneleigh KT17 2HP  
Tel: 020 8393 5099

**Conquest Art**

(Art for disabled people)  
Cox Lane, West Ewell  
KT19 9PL  
Tel: 020 8397 6157  
Email: enquiries@conquestart.org  
www.conquestart.org

**Cruse Bereavement Care**

Tel: 020 8393 7238

**Epsom Common Association**

Chairman: Martin Gandy  
Email: chairperson@epsomcommon.org.uk www.epsomcommon.org.uk

**Epsom & Ewell Ramblers**

Contact: Tony Gullett  
Tel: 01737 551252  
www.epsomandewellramblers.co.uk

**Lower Mole Countryside Trust**

2 West Park Farmhouse, Horton  
Country Park, Horton Lane  
Epsom KT19 8PL  
Tel: 01372 743783  
www.lowermolecountryside.org.uk

**Mid-Surrey Mediation Service**

c/o 67 High Street, Leatherhead  
KT22 8AQ Tel: 07513 524 241  
Email: msmediation@hotmail.co.uk  
www.msmediation.org.uk

**Nonsuch Abbeyfield**

Sheltered Housing for active elderly  
The Old House, Epsom Road  
Ewell KT17 1JZ  
Tel: 020 8394 0050  
www.nonsuchabbeyfield.org

**The Princess Alice Hospice**

West End Lane, Esher  
KT10 8NA  
Tel: 01372 468811  
www.pah.org.uk

**Epsom Relate**

92b High Street  
Epsom KT19 8BJ  
Tel: 01372 722976

**Rotary Club of Epsom**

Meet on Thursdays normally  
1pm-2pm at 46 Burgh Heath Road  
Epsom KT17 4LX  
Tel: 07986 947974  
Email: epsomrotary@live.co.uk  
www.epsomrotaryclub.org

**The Samaritans**

7 Church Road, Leatherhead  
KT22 8AT  
Tel: 01372 375555  
www.samaritans.org

**SeeAbility**

SeeAbility House  
1a Hook Road  
Epsom KT19 8SQ  
Tel: 01372 755000  
www.seeability.org

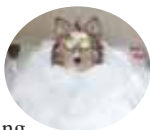
3 Pound Lane  
Epsom  
KT19 8RY

[woodiesblue@googlemail.com](mailto:woodiesblue@googlemail.com)

**MISSY PAWFECT**  
**GROOMING SERVICE**  
[www.woodiesblue.co.uk](http://www.woodiesblue.co.uk)

♥ Pampering your loved ones ♥

Home Boarding  
Doggy Day Care  
Feeding Service  
Washing Drying  
Clipping & Stripping  
Nail Cutting



All breeds of dogs, cats and rabbits

**Tel: 01372 749 964**  
**Mob: 07760 261374**



City & Guilds/NPTC in Dog Grooming Level 2  
Retailers of Natures Menu & Prize Choice

**CLUBS & SOCIETIES**

**Epsom & Ewell Art Group**

Meet Wednesday evenings at Bourne Hall  
 Contact: Richard Seymour  
 Tel: 01372 727482  
 Email: randhseymour@hotmail.com  
 www.epsomandewellartgroup.co.uk

**Epsom Camera Club**

www.epsomcc.org.uk

**Epsom Chamber Choir**

Contact: Dick Bacon  
 Tel: 01372 373644  
 www.epsomchamberchoir.org.uk

**Epsom Choral Society**

Contact: Jean Clew  
 Tel: 01737 813400  
 E: membership@epsomchoral.org.uk  
 www.epsomchoral.org.uk

**Epsom Downs Model**

Aircraft Club  
 Email: membership@edmac.org.uk  
 www.edmac.org.uk

**Epsom Garden Flower Club**

Meet at: Christ Church Hall  
 Christ Church Road,  
 Epsom KT19 8NE  
 1st Thursday of every month at  
 7.45pm (except January)  
 Contact: Elizabeth Toogood  
 Tel: 01372 721353  
 Email: elizabeth@toogoods.com

**Epsom & Ewell History & Archaeology Society**

Secretary: Nikki Cowlard  
 Tel: 01372 745432  
 Email: info@epsomewellhistory.org.uk  
 www.epsomewellhistory.org.uk

**Epsom Male Voice Choir**

Rehearse Wednesdays at 8.00pm  
 in the URC Ewell, London Road  
 No audition necessary.  
 Contact: Tony Dunn  
 Tel: 020 8393 8978  
 www.epsommalevoicechoir.org.uk

**Epsom Mayday Flower Club**

Meet Bourne Hall, Ewell  
 at 1.45pm on 3rd Wed of the  
 month. Hon Sec: Mrs Lorraine  
 Sheehan Tel: 020 8224 3115  
 Email: epsommaydayflowerclub@  
 yahoo.co.uk

**Epsom & Ewell Model Railway**

Club Secretary: Peter Swift  
 Tel 01383 576274  
 www.eemrc.org.uk

**Epsom Light Opera Company**

Membership Sec: Sandra Zeffman  
 Tel: 01737 812118  
 kate@eloc.org.uk www.eloc.org.uk

**Epsom & Ewell Philatelic Society**

Secretary: Chris Forwood  
 Tel: 07966 587190  
 Email: forwood@aol.com

**Epsom Players**

Contact: Steve Green  
 Email: steveg@epsomplayers.co.uk  
 www.epsomplayers.com

**Epsom Recorded Music Society**

Secretary: Martin Le Ray  
 Tel: 01737 845246  
 Email: marjan.leray@btinternet.com

**Rotaract – Epsom Branch**

International organization for people  
 aged 18–30, offering a wide range of  
 activities.  
 www.rotaract.org.uk/epsom

**SPORTS & LEISURE**

**Leisure Centres**

Rainbow Leisure Centre, East Street,  
 Epsom KT17 1BN  
 Tel: 01372 727277  
 www.gll.org

**USEFUL CONTACTS**

**Citizens Advice Bureau**

The Old Town Hall, The Parade  
 Epsom KT18 5AG  
 Tel: 0844 411 1444  
 www.epsomewellcab.org.uk



**Rainbow Leisure Centre**

**Police Station**

Church Street, Epsom  
 KT17 4PS  
 Emergency Tel: 999  
 To report non urgent crime  
 Tel: 101 or 01483 571212  
 www.surrey.police.uk

**Fire Station**

Church Street, Epsom  
 KT17 4PW  
 Tel: 01372 722223  
 Emergency Tel: 999

**Libraries**

Epsom Library, The Ebbisham  
 Centre, 6 The Derby Square  
 Epsom KT19 8AG  
 Tel: 0300 200 1001

**Ewell Library**

Bourne Hall, Spring Street,  
 Ewell KT17 1UF  
 Tel: 0300 200 1001

**Ewell Court Library**

Ewell Court House, Lakehurst Road  
 Ewell KT19 0EB  
 Tel: 0300 200 1001

**Stoneleigh Library**

1 Stoneleigh Broadway, Stoneleigh  
 Epsom KT17 2JA  
 Tel: 0300 200 1001

**Travel**

National Rail Enquiries  
 Tel: 08457 48 49 50  
 www.nationalrail.co.uk

# TRADITIONAL PERSONAL SERVICE



## Gumersalls

**Solicitors • Commissioners for Oaths  
Notary Public  
Independent Professional Friendly  
& Confidential  
Legal Advice and Services  
In Epsom Since 1771**

**Conveyancing  
Powers of Attorneys & Wills  
Probate & Trusts  
Tax and Estate Advice  
Divorce Specialists  
Family Law  
General Disputes  
Landlord & Tenant  
Email: [solicitors@gumersalls.co.uk](mailto:solicitors@gumersalls.co.uk)  
[www.gumersalls.co.uk](http://www.gumersalls.co.uk)**

**Epsom**

**01372 721122**

**The White House 16 Waterloo Rd, Epsom, Surrey KT19 8AZ**

*Authorised and Regulated by the Solicitors Regulation Authority No 74839*



"All children work in a harmonious atmosphere, and strive to achieve their best"

"The standards reached by pupils at the end of Key Stage 1 have improved year on year and are now above the national average"



"The curriculum is good and enriched by range of extra-curricular activities."



"The school is very effective in the way it listens to its pupils' voice."

# Do you know Epsom Primary And Nursery?

POUND LANE, EPSOM,  
SURREY KT19 8SD



"The playground is very well equipped for active break and lunchtimes"



**Come and visit us – a warm welcome  
awaits you and your child!**

Telephone : 01372 720 608

E mail : [office@epsom.surrey.sch.uk](mailto:office@epsom.surrey.sch.uk)

[www.epsomprimaryschool.co.uk](http://www.epsomprimaryschool.co.uk)