

WOKING

RESIDENTS' GUIDE



PLUS GROUP



2011-2012

Providers of quality childcare and education

Toad Hall
Nursery Group

Come and see how we can support your child to learn and develop in the welcoming, friendly and spacious environments of our nurseries in Surrey. We would be pleased to show you our facilities and the range of services and activities we offer at our nurseries at Haslemere, Ottershaw, Ripley, Woking and at Felcott Road and Manor Road, Walton-on-Thames.

Why choose a Toad Hall Nursery?

- Full and part time sessions for children from 3 months to 5 years
- Flexible bookings to meet parents' changing needs
- Opening hours from 0800 – 1800 hours with extended days from 0730 hours if required
- Qualified, caring and loving staff who have all been thoroughly vetted
- Secure entry system
- Individual routine for babies
- OFSTED registered
- We follow the statutory 'Early Years Foundation Stage' framework to support your child's development
- Excellent partnership with parents
- All food provided is purchased from local suppliers and prepared on site daily
- 10% sibling discount
- Free places for 3 and 4 year olds

For a brochure or to arrange a visit please contact us at:
 Haslemere: 01428 654117 Email: Haslemere.nursery@toadhall-nursery.co.uk
 Ottershaw: 01932 874286 Email: ottershaw@toadhall-nursery.co.uk
 Ripley: 01483 222020 Email: ripley@toadhall-nursery.co.uk
 Woking: 01483 486116 Email: woking.nursery@toadhall-nursery.co.uk
 Felcott Road, Walton-on-Thames: 01932 252858
 Email: walton@toadhall-nursery.co.uk
 Manor Road, Walton-on-Thames: 01932 226975
 Email: manorroad@toadhall-nursery.co.uk

www.toadhall-nursery.co.uk

CONTENTS

| | | | |
|--|-------|---|------|
| ❖ Foreword | 5 | Listings: | ❖ |
| ❖ Woking's Prosperous Future to Match a Golden Heritage | 6 | Places of Worship | 21 ❖ |
| ❖ Location and Transport | 11 | Health | 23 ❖ |
| ❖ Education | 12 | Education | 24 ❖ |
| ❖ Health | 12 | Local Government | 29 ❖ |
| ❖ Sport and Leisure | 13 | Charitable & Voluntary Organisations | 29 ❖ |
| ❖ Local Attractions | 15 | Sport & Leisure | 29 ❖ |
| ❖ Woking Map | 16/17 | Clubs & Societies | 29 ❖ |
| ❖ Five Things to Know | 20 | Useful Contacts | 29 ❖ |

Every effort has been made to ensure information and telephone numbers listed in this guide are accurate. Material has been researched from publicly available data and verified to the best of the publisher's abilities. The publishers, however, do not accept liability for any errors or omissions, or loss or damage, resulting therefrom.

Plus Publishing Services would like to acknowledge editorial and pictorial contributions by Bill Day.

Copyright: Plus Publishing Services, Sycamore House, Willesborough Industrial Park, Kennington Road, Willesborough, Ashford, Kent TN24 0NR
Tel: 01233 643574 • Fax: 01233 641816 • Email: admin@pluspublishing.co.uk • www.pluspublishing.co.uk

The
Family
Practice

ST JOHN'S HEALTH CENTRE

The Family Practice
&
Travel Health Clinic
@
St John's Health Centre

- ❖ A friendly and innovative Health Centre in the heart of St John's village
- ❖ Open for patients living in Woking and the surrounding areas including Horsell, Pirbright, Bisley, Chobham and West End
- ❖ Enthusiastic and supportive team of Doctors, nurses and administrative staff
- ❖ Community Nursing and phlebotomy on site
- ❖ We provide a wide range of NHS and non-NHS services
- ❖ On-line GP appointment booking and repeat medication ordering
- ❖ Saturday and early morning surgeries
- ❖ Travel Health Clinic and designated Yellow Fever vaccination centre
- ❖ We offer both NHS and non-NHS Travel advice and vaccinations by qualified specialists in Travel Medicine
- ❖ Last minute travellers accommodated and non-registered patients welcome

Hermitage Road, St John's, Woking, Surrey GU21 8TD - Tel: 01483 227060



Challenge Fencing Ltd

Your local supplier for quality, choice and service

wish to offer to all Woking Residents' Guide readers a

complimentary discount of 10%*

on fencing products purchased from our Woking yard at Lucas Green Road

We have large stocks of:

- fence panels
- trellis
- timber post & rail stakes
- chestnut fences
- gates
- railway sleepers
- decking
- concrete products

All manufactured to the highest standard

★ *To obtain your discount when purchasing, please be sure to bring this year's book advertisement with you (Offer expires Feb 2012)*



Fence panels, posts & boarding



Trellis in square, diamond & lattice



Range of continental designer panels



Reclaimed & new railway sleepers



Estate & farm gates in soft & hardwood



Entrance & side gates in hard & softwood

One call can solve it all

The Timber Yard, Lucas Green Road, West End, Woking, Surrey GU24 9YB (Timber Yard is at the very end of Lucas Green Road on right hand side)

Tel: 01483 472264

wokingsales@challengefencing.com

www.challengefencing.com

OPEN: Weekdays 7.30am–5.00pm, Saturdays 8.00am–1.00pm

We have a register of independent contractors should you need assistance to erect your fencing or hang your gates. Trade and Retail welcome. Delivery service available.



FOREWORD

WHEN you need to find the telephone number of your favourite restaurant, the address of a local school or where to go to buy something special, where should you look?

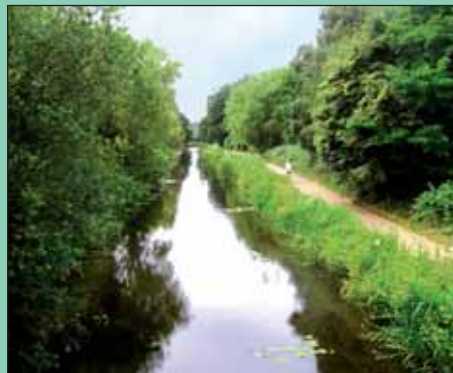
You could wade through the pages of a directory, or search the Internet. But how much easier and quicker it is to keep this little residents' guide at hand.

In it you will find a wealth of local references, neatly gathered together in easy-to-find sections.

It also has a street map on the centre pages, which can be invaluable when looking for an unfamiliar road.

This guide is designed for those who live in Woking, or are planning to do so. It will acquaint them with what the town has to offer.

It has been well supported by advertisers, who have recognised its value in reaching its customers.



The Basingstoke Canal

Sharon Bell, Publisher

SURREY ARTS

Engaging – Creative – Inspiring

- Orchestras – choirs – ensembles
- Instrumental lessons • Dance
- Drama • Visual Art • Wardrobe

At Surrey Arts there is
something for
everyone

Take a look at our website
or call 01483 519290



www.surreycc.gov.uk



Making Surrey a better place

WOKING'S PROSPEROUS FUTURE TO MATCH A GOLDEN HERITAGE

WOKING'S social and economic transformation in the last century and a half has been dramatic. The town has rarely resisted an opportunity to find ways of making improvements and, as this guide is released for public consumption, two major schemes are underway that will demonstrate again the local authority's ambition to maintain and enhance the town's status.

The vast £40m scheme to re-develop the Hoe Valley is due for completion in 2012. It involves the removal of 200 homes from the flood plain; the provision of new community facilities; the protection of a school from flooding; an extension of Woking Park with footway and cycle facilities; the re-building of Elm Bridge and three other bridges; and the provision of 150 new homes.

Meanwhile, two major developers, Willmott Dixon and Carisbrooke, have linked-up with Woking Borough Council to re-develop more than five acres of Woking, close to the rail station.

The plan is to build residential accommodation, leisure facilities, and provide enough commercial and retail space to give Woking the boom shopping and commercial potential it needs to become one of Surrey's most improved towns.

At the turn of the Millennium, Woking had become a bustling commercial centre with 100,000 residents from many varied backgrounds. Today's wholesale re-development raises its profile above the level of mere London commuter belt dormitory town to an urban area with more prosperous and ambitious aspirations.

In the past, Woking has been best known for its most famous resident, one HG Wells, who was living in the town when producing the first great science-fiction novel, *War of the Worlds*, at the end of the 19th century.

Woking receives an honourable mention in the Domesday Book when it was first known as Wochinges. The area was divided into four parishes in medieval times, served by Horsell Church, Old Woking Church, Pyrford Church and Byfleet Church.

In 1272, the royal residency of Woking Palace was established. By the Tudor period, it was flourishing as a useful port of call for the Royal family, either to break a journey or to spend the weekends hunting. In 1490 Henry VII signed the Treaty of Woking there. At that time it was the home of his mother, Margaret Beaufort.

Never a principal royal residence, the palace enjoyed a chequered life. It had farm



The Martian, a metallic sculpture

WOKING RESIDENTS' GUIDE

buildings, two chapels, stables and accommodation, everything needed for a visit from the monarch, or from guests representing the highest levels of society in the land.

By the time of Queen Elizabeth's death, the palace was going through one of its lean patches, out of favour with royalty. King James I passed it to the nearby estate owner, Sir Edward Zouch, in 1620. The building fell into a state of disrepair, crumbling and unloved by all except archaeologists and wildlife. Rare plant life has always flourished there, and in 1988 Woking Borough Council bought the site. By then the centuries of decay had reduced the surface remains to a single building without a roof.

The Basingstoke Canal was completed in 1794 after six years of toil. Built to improve links between London and the south coast, it never got beyond Basingstoke, but the Woking borough section between Brookwood and West Byfleet, has been an enduring success and source of income and pleasure to successive generations of townsfolk.

On arrival, visitors cross small bridges that span the canal. Locks, moored water craft, wildlife and remnants of Woking's industrial age complete the scenic picture.

The Goldsworth Nursery opened in 1790, the first of many commercial nursery gardens opened in the district. But Woking's economic development and residential growth developed really significantly from the opening of Woking Common Railway Station in May 1838. The rail between Woking and London and Woking and Southampton encouraged steady expansion and prosperity.

A branch rail line was opened in 1854 with the specific intention of providing transport for London's deceased, who were laid to rest at Brookwood Cemetery, the largest privately owned burial ground in Britain. It is the final resting place of distinguished portrait artist John Singer Sargent, and English novelist Dennis Wheatley.

St Bede's Church of England (Aided) Junior School



Bush Lane, Send, Woking, Surrey GU23 7HP

Telephone: 01483 222143

Fax: 01483 224176

Email: head@stbedes-junior.surrey.sch.uk

Website: www.stbedes-junior.surrey.sch.uk



Looking for a venue for your club?



We have large grounds with sporting facilities, a gym, hall and stage, and a meeting room for hire at competitive prices.



Contact:
admin@stbedes-junior.surrey.sch.uk
or ring 01483 222143
and ask for the
School Business Manager





dental sense



NEW Patient consultation only **£35** including X-rays

****Free treatment for NHS exempt patients and children under 18yrs****

- Dental Implants
- Invisible Braces
- Porcelain Veneers
- IV Sedation
- White Fillings
- Cosmetic Dentistry
- Dentures
- Crowns & Bridges
- Smile makeovers
- Tooth Whitening
- Root Canal Treatment
- Wisdom Tooth Removal

Invisible
Braces
from **£650**

Tooth
Whitening
from **£99**

Implants
from **£999**

Now registering **NEW**
NHS & **PRIVATE PATIENTS**

Address: 41 Windsor Road, Chobham, Surrey GU24 8LD

Contact Telephone: 01276 855 994

Email: enquiries@dentalisense.co.uk

Web: www.dentalisense.co.uk

WOKING RESIDENTS' GUIDE

HG Wells, the novelist and pioneer of science fiction settled in Woking in 1895 and lived in Maybury Road before finding larger accommodation for himself and his new wife at Worcester Park. His autobiography records memories of learning to ride a bike in the town.

Wells' interest in cycling is not recorded in detail, but it is fairly safe to imagine that when writing the *Time Machine* (1895), *The Invisible Man* (1897), and *War of the Worlds* (1898), his interest in pedal-power enabled him to explore at close hand the early traces of Woking's Stone Age existence at Goldsworth Park; Bronze Age life at Horsell Common, where burial mounds have been found; and evidence of Roman occupation in Old Woking, where digs have uncovered coins and pottery from those early times.



Woking rail station

Woking's long term flirtation with the giants of literature – George Bernard Shaw also lived in the town – developed in 1859 when Charles Dickens was made a trustee of the Oriental College, built originally as the Royal Dramatic College. William Makepeace Thackeray was another trustee. It was launched as a drama school, employing retired actors to teach students, but the concept was a failure and it closed in the late 1870s due to lack of funds. It later became the Oriental Institute, a centre for Orientals to stay when visiting the UK and a retirement home.

In 1878 the first crematorium in the UK was opened at Woking on land owned by Sir Henry Thompson, surgeon to Queen Victoria and founder of the Crematorium Society. He acquired one acre of land by public subscription. The scheme was declared a success, and by 1911 a further nine acres of land had been acquired. The Marquis of Queensbury, Dr Barnardo and Thomas Hardy are among the notables to have been cremated there.

In 1889 Britain's first purpose built mosque was developed in Woking. Now a grade-two listed building, it was first created to provide a place of worship for Muslim students attending the nearby Oriental Institute.

Woking's first cinema opened in Chertsey Road as the Central Hall in 1913. The silver screen was so popular in those days that an extension was ordered and completed in 1926 to accommodate 1,046 cinema-goers. In 1929 it was renamed the Plaza, and, in 1950, the Gaumont. The cinema closed in 1959 and was subsequently demolished.

ACP Plumbing & Heating

Established in 1990

Andy Pearse covers all aspects of Plumbing & Heating. Gas Safe Registered & Fully Insured.



From a completely new central heating system, boiler replacements & upgrades, power flushing & bathrooms to simple plumbing/heating maintenance work.

Friendly & reliable service is assured.

Tel: 01483 828956 Mob: 07774 409274

Email: andy.pearse@live.co.uk

8 Greyfriars Drive, Bisley, Woking, Surrey GU24 9EE



Shey Copse Riding Centre

Lesson • Riding for Disabled
Own a Pony Courses • Pony Parties
Horse Owners Certificates & BHS Exams
Organised Trips • Picnic Rides • Newsletters
Corporate Events

Please see our website for everything you need to know.

www.sheycopseridingcentre.co.uk

01483 770022/726345

Old Woking Rd, Woking, Surrey, GU22 8HS

WOKING RESIDENTS' GUIDE

At its peak, the cinema shared newsreels with another town cinema, the Odeon, Duke Street, on the corner of Broadway. Scheduling of the news bulletins had to be carefully organised to give staff time to run the canisters of newsreel footage from one picture house to the other with audiences unaware of the logistical planning involved. Today, the Ambassadors cinema complex and theatre is one of the best equipped in the country.

A Muslim burial ground was established on the south east corner of Horsell Common in the Second World War to receive the bodies of soldiers from the Indian Army.



Shah Jahan Mosque

Woking has retained a close affinity with Royalty over the years. When the council announced its energy saving policy in 2004 – one of the most successful schemes produced by any local authority in the country – the Prince of Wales was known to be supportive of its efforts. So, by 2007, the Prince of Wales needed little persuasion to open a prestigious exhibition on climate change for the town.

Woking has a wide range of buildings and other sites of architectural or historic interest, as detailed earlier. In more recent times, in 2007, Woking's £7m Lightbox gallery and museum was opened on the banks of the Basingstoke Canal.

Harven School of English

Would you like to host a foreign student?

We are looking for friendly and welcoming homestays who would like to host students from all over the world.

Short and long stay students.

Adult courses 17+ all through the year.

Summer school students aged 14-17
in July & August.

Competitive rates of pay and full support
offered from the school.

Contact Christine info@harven.co.uk
Tel: 01483 770969

St Mary of Bethany

Mount Hermon Road, Woking GU22 7UH



We're a friendly,
community-based
Anglican church,
worshipping Jesus
in a variety of styles.



Find out more at
www.stmaryofbethany.org.uk
Tel. 01483 723424

LOCATION AND TRANSPORT

WOKING, located 23 miles from central London, offers easy access to the M25, M3 and A3. The A320, which passes through the town centre, connects to the M25 at junction 11 for motorists travelling north; and the A3 at Guildford for those going south. The nearest M3 access point is junction 3.

Rail – The main rail station in central Woking – the busiest in Surrey – connects directly to London Waterloo Station. Trains depart every few minutes. The **Eurostar** terminal at St Pancras is reached by Northern underground line from Waterloo.

Woking station offers direct, fast links to Exeter, Cardiff, Salisbury, Bristol, Winchester, Bournemouth and the international ferry ports at **Portsmouth and Southampton**.

Bus – Regular bus services run between Woking and 14 local villages. Timetables and tickets are available from the Arriva travel desk at Woking Library. **Bustler** buses, run by Woking Community Transport, are available for passengers with mobility difficulties. They provide door to door transport for young and old suffering from permanent or temporary disability through accident or illness. Escort can travel with the passenger.

Air – Woking is located midway between **London Heathrow** and **London Gatwick** airports. The Railair coach link to Heathrow departs every half hour from Woking rail station. Trains go via Guildford packed with passengers travelling to and from Gatwick.



Rated
Good by
Ofsted

Cherry Brook & Cherrywood Nursery's

Sectford Bridge Road
New Hair GU24 0QF
01483 336662
cherrybrook@cherrychildcare.co.uk
cherrywood@cherrychildcare.co.uk

The Green, Cometary Poles
Frimley GU14 0JT
01483 799114

Cherry childcare

Open Weekdays 8am to 6.15pm
Full or Part Day Care
Excellent Education Program
Dedicated Baby Unit & Sleep Rooms
Fantastic Outdoor Area
Highly Trained Staff

Special offer*
Save 30% off Administration Fee with this flyer

Special offer*
Get up to 3 free settling in visits with this flyer

Special offer
Save £300 on 3 Months Fees*
This offer is limited to new clients whose child registers at this nursery before 1st December 2011

For more details visit
www.CherryChildcare.co.uk

**Mackrell
Turner
Garrett**

Solicitors
www.mackrell.com

WOKING
21-25 Church St. West
Woking
Surrey
GU21 6DJ
01483 755609

KNAPPHILL
8 Anchor Crescent
High Street
Knaphill, Surrey
GU22 2PD
01483 476022

“SOUND LEGAL ADVICE, FRIENDLY PEOPLE”

FOR YOU AND FOR YOUR BUSINESS

- Moving house
- Property disputes
- Wills, probate & trusts
- Personal injury
- Employment disputes
- Family/Children/Divorce
- Commercial conveyancing
- Landlord & tenant
- Company & commercial
- Litigation
- Employment law
- Insolvency

EDUCATION

HOW appropriate that the **Bishop David Brown School**, Woking should be designated a specialist school for the performing arts when among its alumni are rock legends Paul Weller (The Jam) and Rick Parfitt (Status Quo).

Bishop Brown is one of a number of high performing secondary schools in the town. They include **Woking High School**, **Winston Churchill School**, and **St John the Baptist RC School**.

Further education facilities are focussed on **Woking College** in Old Woking, an outstanding Sixth Form College providing full time education for 800 students aged 16-19.



Woking High School

The college, situated in Rydens Way, offers a variety of AS and A2 courses as well as a range of vocational courses and a limited number of GCSE options.

The college delivers high academic achievements with consistently good examinations results. But the college also has time for a varied programme of complementary activities, from sport to drama, with the Duke of Edinburgh Award and Young Enterprise schemes popular activities.

Parents have a range of independent prep and secondary schools to consider. The town is also the home of the Tante Marie Cookery School, the oldest of its type in the country, bought by celebrated chef Gordon Ramsey.



HEALTH

THE Surrey Primary Care Trust is the second largest in the country with a budget of £1.2billion. **Woking Community Hospital** in Heathside Road is an NHS walk-in centre offering fast and convenient access to healthcare advice and treatment for minor injuries and illnesses.

Accident and emergency services are available at **St Peter's Hospital**, Guildford Road, Chertsey and the **Royal Surrey County Hospital**, Egerton Road, Guildford.

Woking Nuffield Hospital provides private healthcare. A breastfeeding support group has been launched by **Woking Children's Centre**. It is run by mothers for mothers in the Sheerwater and Maybury areas.

Residents needing to register with a dentist should contact Woking Community Hospital.

SPORT AND LEISURE

WOKING is the home of the mighty McLaren motor racing empire; a David Lloyd Racquet, Health and Fitness Club and a football club ambitious enough to invite Arsene Wenger's Arsenal to play a pre-season friendly before the start of the 2011-12 campaign.

The borough council claims to offer facilities for leisure and fitness for all age groups unrivalled by other towns.

Wholesale re-development in the area meant that travel by car to **Woking Football Club's** Kingfield Stadium for the start of the 2011-12 season was something of a lottery.

There were more bulldozers, diggers and cranes than cars in the area – just a 15 minute walk from the town centre – with motorists diverted from the normal route to the ground.

A non-league club, Woking was founded in 1889. Managed by Garry Hill, they play in the Blue Square League.

Woking Leisure Centre and Pool are set in the glorious Woking Park, an oasis of pleasure for all visitors, especially children. Opened in 1976, the leisure centre's main



Woking Football Club

The Pine & Oak Factory

- where quality costs less !

We won't be beaten on price and service. Excellent Quality Pine & Oak Furniture

Your One-Stop Shop for Finely Crafted Solid Timber Furniture

The Pine & Oak Factory is a family run business established over 25 years, supplying some of the best quality, solid wood furniture available in the UK at the lowest possible prices.

- Ready assembled • Traditionally crafted • Solid timber throughout
- Many distinct finishes • Compare our quality & prices

Get 14% discount with reference: WRG 786-110/52

Opening hours:
Mon-Sat
10.00am-6.30pm




For a fantastic quote on your Pine & Oak Furniture, please visit our showroom
8-10 Gorsewood Road, St. Johns,
Woking Surrey – GU21 8UX

Freephone: 08002796786 • Tel: 01483473645
Email: info@bestpineoak.co.uk
Web: www.bestpineoak.co.uk



WOKING RESIDENTS' GUIDE

AWARD WINNING CARING HOMES FOR OLDER PEOPLE

CARING HOMES 



CARING HOMES IN SURREY

Caring Homes is an independently owned multi-award winning care home group with 65 quality care homes located throughout the United Kingdom. Our care homes offer:


- Stately Settings
- Gracious Accommodation
- Premier En-Suite Bedrooms
- Stunning Landscaped Gardens
- Engaging Activities & Hobbies
- Restaurant Standard Cuisine
- Hair & Beauty Treatments
- Residential & Nursing Care
- Specialist Dementia Care
- Personalised Care Plans

1 COXHILL MANOR CARE CENTRE
Chobham
Surrey GU24 8AU
Freephone
0808 1661332

2 HORSELL LODGE CARE HOME
Woking, Surrey GU21 4JA
Freephone
0808 166 1354

www.caringhomes.org



CARING HOMES 

WOKING RESIDENTS' GUIDE

sports hall is superbly equipped following refurbishment. It is used for a number of different sports and events, which includes antiques fairs and the annual beer festival.

The **Pool in the Park**, situated next to the leisure centre, has a 25-metre swim pool, specialist teaching pool, and Leisure Lagoon, with swirling rapids, flumes and waves.

Woking Blackhawks Basketball Club play at Woking Leisure Centre on Friday nights. The men's first team, known as The Flyers, compete in Division One of the Wessex League.

A tour to Portugal preceded the start of the season for **Woking Rugby Club**, whose clubhouse is based in Camphill Road, West Byfleet. The club offers opportunities to players of all abilities from, as its website says, the 'novice to the best'. The Surrey League side has a reputation for being the friendliest club in Surrey. The clubhouse is open seven days a week with snooker, pool, darts, table tennis and live music on offer to members. The beer garden is popular.

Woking is a golfer's paradise. No fewer than 11 golf courses are available for players of all abilities. They are spread around the area at West Byfleet, Pyrford, Brookwood, Knaphill, Old Woking and Sutton Green.

Woking Golf Club at Hook Heath is among England's top 100 courses. It once hosted the great Bobby Jones and the rest of the American Walker Cup team. That was 1926, but today, as then, the heather remains a trap best avoided. The course is a testing 6,531 yards requiring the utmost accuracy.

Woking and Horsell Cricket Club run four sides from their club in Brewery Road, Horsell. Three of the teams play in the Surrey Championship and one in the Fullers League. They play a full programme of fixtures for their Sunday sides. The club runs a colts section. Practise nights for colts are held on Fridays.

The David Lloyd Racquet, Health and Fitness Club, based just behind the town football club's ground, is superbly equipped.

Tennis, crazy golf and putting facilities are all available at Woking Park.

LOCAL ATTRACTIONS

WOKING is blessed with more parks and open spaces than many towns in west Surrey. The peace, solitude and sound of wildlife in these lovely open spaces makes it difficult for the visitor to believe the town is only 23 miles from central London.

Sports days, firework displays and other forms of entertainment flourish in the parks and open spaces. Playgrounds, skateparks and games areas are always busy, perfect venues for parents seeking forms of pleasure and entertainment for their children.



Goldsworth Park

The most popular sites include **Woking Park, Queen Elizabeth Gardens, Goldsworth Park, Waterers Park, Pyrford Common, St Johns Lye, Wheatsheaf Recreation Ground, West Byfleet Rec, Byfleet Rec, and Horsell Moor.**

Reproduced by permission of Ordnance Survey on behalf of The Controller of Her Majesty's Stationery Office, © Crown Copyright 100041368





Sheerwater

Horsell

Maybury

WOKING

Mount Hermon

Kingfield

Old Woking

Mayford

Westfield

Woking High School

St Andrew's School

Surrey History Cent

Cricket Club

Woking Community Hosp

Woking FC

Woking Leisure Cent

Woking Community Hosp

Woking Community Hosp

Woking Community Hosp

Woking Community Hosp

Woking Community Hosp

Woking Community Hosp

Woking Community Hosp

Woking Community Hosp

Woking Community Hosp

Woking Community Hosp

Woking Community Hosp

Woking Community Hosp

Woking Community Hosp

Woking Community Hosp

Woking Community Hosp

Woking Community Hosp

Woking Community Hosp

Woking Community Hosp

Woking Community Hosp

Woking Community Hosp

Woking Community Hosp

Woking Community Hosp

Woking Community Hosp

Woking Community Hosp

Woking Community Hosp

Woking Community Hosp

Woking Community Hosp

Woking Community Hosp

Woking Community Hosp

Woking Community Hosp

Woking Community Hosp

Woking Community Hosp

Woking Community Hosp

Woking Community Hosp

Woking Community Hosp

Woking Community Hosp

Woking Community Hosp

Woking Community Hosp

Woking Community Hosp

Woking Community Hosp

Woking Community Hosp

Woking Community Hosp

Woking Community Hosp

Woking Community Hosp

Woking Community Hosp

Woking Community Hosp

Woking Community Hosp

Woking Community Hosp

Woking Community Hosp

Woking Community Hosp

Woking Community Hosp

Woking Community Hosp

Woking Community Hosp

Woking Community Hosp

Woking Community Hosp

Woking Community Hosp

Woking Community Hosp

Woking Community Hosp

Woking Community Hosp

Woking Community Hosp

Woking Community Hosp

Woking Community Hosp

Woking Community Hosp

Woking Community Hosp

Woking Community Hosp

Woking Community Hosp

Woking Community Hosp

Woking Community Hosp

Woking Community Hosp

St Andrew's School

REC GRND

Woking Community Hosp

Woking Community Hosp

Woking Community Hosp

Woking FC

Westfield Primary School

Westfield Primary School

Boundary Business Cen

Shah Jehan Mosque

St Dunstons RC Primary Sch

Woking Community Hosp

St John The Baptist RC School

Kingfield School

Westfield Primary School

Westfield Primary School

Monument Bridge East Ind Est

Lion Retail Pk

St Dunstons RC Primary Sch

Woking Community Hosp

Woking College

Kingfield School

Westfield Primary School

Westfield Primary School

Genesis Business Park

New Monument School

Prins Willem Alexander School

Woking Community Hosp

Woking College

Woking College

Woking College

Woking College

Woking College

Genesis Business Park

New Monument School

Prins Willem Alexander School

Woking Community Hosp

Woking College

Woking College

Woking College

Woking College

Woking College

Genesis Business Park

New Monument School

Prins Willem Alexander School

Woking Community Hosp

Woking College

Woking College

Woking College

Woking College

Woking College

Woking Community Hosp

Woking Community Hosp

“When it comes to apples, I’m as picky as you are.”

Michaela Grundon
Waitrose Partner



Free
delivery
when you
spend £50.

You only get Waitrose service at Waitrose.com. Order online and our dedicated Partners will select your groceries with all the care and attention you'd take yourself. And we're still the only supermarket to offer free delivery on every online grocery order, when you spend £50.

Waitrose.com
We shop like you shop

Min online grocery spend £50. Selected postcodes.

WANT THE GREAT TASTE BUT NOT ALL THE FAT?



FREE REGULAR 6" SUB
when you buy a 6"
Sub and medium drink



VALID UNTIL DECEMBER 31st 2011

©2008 Doctor's Associates Inc. SUBWAY® is a registered trademark of Doctor's Associates Inc. This coupon entitles you to a FREE regular 6" Sub when you buy any 6" Sub and medium cold (chilled) drink. FREE Sub must be of equal or lesser price. FREE Sub is not available with double meat, extra cheese, bacon or any other add-on. Not to be used in conjunction with any other offers or discounts, including SUB OF THE DAY®. Offer available any time of day at your local SUBWAY® store. Limited to one offer per customer, per visit. Photocopies not accepted. SUBWAY® where to reduce the coupon. This coupon has no cash value, is not for sale and is only valid at your local Working Subways Store. Prices and participation may vary.

Stores at:
Peacock Shopping Centre,
Wolsey Place Shopping
Centre & Chertsey Road,
Woking

*Refined meat. **Panned meat. The Subs with 5g of fat or less include the regular 6" Chicken Breast (4g of fat, 257 calories), Sweet Onion Chicken Teriyaki (4.3g of fat, 302 calories), Turkey Breast* (3.2g of fat, 271 Calories), and REGULAR CHICKEN (1.2g of fat, 202 Calories) on whole wheat bread produced according to standard recipe with meat, real cheese, lettuce, tomatoes, green peppers and cucumbers. Customer responsible to modify the standard recipe or add cheese or condiments that increase fat or calorie content. Consult with your physician before starting a new dietary programme. For a limited time only. Some participating stores only. Prices and participation may vary. Third party trademarks used under license. ©2011 Doctor's Associates Inc. SUBWAY® is a registered trademark of Doctor's Associates Inc.

SUBWAY
eat fresh.™

WOKING RESIDENTS' GUIDE

The big four local attractions – **Thorpe Park**, **Chessington World of Adventures**, **Legoland**, **RHS Gardens at Wisley** and **Brooklands Museum** – are within easy reach of Woking.

For more than a century **Wisley** has been a centre of gardening excellence. There are more than 200-acres of garden to explore with RHS experts available to pass on valuable gardening tips.

Brooklands Museum, the world's first purpose-built motor racing circuit, is recognised as the birthplace of British motor sport and aviation. As a dedicated education centre, it attracts almost 10,000 schoolchildren every year.

Other local attractions include **Mizen's Miniature Railway**; **Mercedes Benz World**, 10 minutes by road or train from Woking; **Clandon Park**, **Hachlands Park**, and **Painshill Park**.

One of the most popular attractions is right on the doorstep for Woking residents. **Woking Park** guarantees a lovely day out for families with a reputation for being a safe haven for children to run free.

The 43-acre park has a well supervised play area for children with the leisure centre and pool in the park an added incentive to visit. Two ponds in the park provide wonderful habitat for wildlife and a leafy venue for a picnic.

Surrey Wildlife Trust and Horsell Common Preservation Society have opened the new **Bedser Woodland Trail** in honour of the late Sir Alec Bedser, former England and Surrey bowler, who lived in the area and died recently. Sponsored by the borough council, the 1.5km circular trail is used by runners and families out for a leisurely weekend walk.

The ruins of **Woking Palace** can be found east of Old Woking, near the River Wey. It was once an important Royal palace during the Tudor period. All that remains are brick walls, a small, stone building and foundations. The palace is declared an Ancient Monument, the site of special scientific interest.



Pool in the Park



FIVE THINGS TO KNOW

- 1 Woking rail station is the busiest in Surrey
- 2 The 2012 Olympic cycle events will come through Woking from The Mall
- 3 The Basingstoke Canal Festival is held every Easter
- 4 Woking is where the Martians first land in H.G. Wells' *The War of the Worlds*
- 5 The 240-foot high Export House is the town's tallest building

LISTINGS

PLACES OF WORSHIP

Christ Church Woking
Town Square, Woking GU21 6YG
Tel: 01483 740897

Christian Science Church & Reading Room
11 Heathside Road
Woking GU22 7EY
Tel: 01483 760731

The Coign Church
1-5 Church Street West
Woking GU21 6DJ
Tel: 01483 714150
www.coign.org

Emmanuel Chapel
18 Portugal Road
Maybury
Woking GU21 5JE
Tel: 01483 835240
www.emmanuelchapel.org.uk

Horsell Evangelical Church
High Street, Horsell
Woking GU21 4SZ
Tel: 01483 767531
www.horsellec.org.uk



Christ Church, Woking

Muslim Community Centre
77-79 Maybury Road
Woking GU21 5JH
Tel: 01483 762271

New Life Church
High Street
Old Woking GU22 9BX
Tel: 01483 725660
Email: office@newlifechurch.org.uk
www.newlifechurch.org.uk

Religious Society of Friends (Quakers)

Friends Meeting House
41 Park Road
Woking GU22 7DB
Tel: 01483 726776
www.wokingquakers.org

St Dunstons Catholic Church

Shaftesbury Road
Woking GU22 7DT
Tel: 01483 760652
Email: st.dunstan@dabnet.org
www.st-dunstans.org

St John's Church

Church Road, St John's
Woking GU21 7QN
Tel: 01483 726039
Email: office@stjohnswoking.org.uk
www.stjohnswoking.org.uk

St Hugh of Lincoln Catholic Church

95 Victoria Road
Knaphill
Woking GU21 2AA
Tel: 01483 472404
Email: sthugh.priest@ntlworld.com
www.sthughoflincoln.org

www.skyco.uk.com

Delivering your favourite American and Canadian groceries to your door

Over 500 famous brand named products available from stock at competitive prices

For further information and orders please visit our website

www.skyco.uk.com

Tel: 01483 776444 e-mail: info@skyco.uk.com



White Lodge Farm Shop

Guaranteed free from antibiotics, growth promoters and factory farming.

Pork Sausages • Award Winning Bacon • Gammon • Ham • Dexter Beef

Station Road • Chobham
Woking • Surrey • GU24 8AR
Tel: 01276 858628
Fax: 01276 855198
www.white-lodge-farm.co.uk



A.M. Varndell *Lawnmower Repairs*

Pick up & delivery service available.
Parks & garden machinery specialist.

White Lodge Farm, Station Road,
Chobham, Woking, Surrey GU24 8AR
Tel: 01276 855727 Mobile: 07947 430172
Answerphone service available
Email: varndellmowerman@aol.com



Variety of tools sharpened including:

- Secateurs
- Scissors
- Garden Shears
- Knives
- Lawnmowers
- Strimmers
- Chainsaws
- Rotavators
- Small Tractors
- Small Engines

WOKING RESIDENTS' GUIDE

St Mary of Bethany Church
Mount Hermon Road
Woking GU22 7UH
Tel: 01483 723424
www.stmaryofbethany.org.uk

St Michael's Shared Church
Dartmouth Avenue, Sheerwater
Woking GU21 5PH
Tel: 01483 727835

St Pauls Church
Oriental Road
Woking GU22 7BD
Tel: 01483 772081
www.stpaulswoking.org.uk

St Peters C of E Church
Church address: Church Street
Old Woking GU22 9JE
c/o The Rectory
28 High Street, Old Woking GU22 9ER
Tel: 01483 762707

Trinity Methodist Church
Brewery Road, Woking GU21 4LH
Tel: 01483 730754
www.trinitywoking.org.uk

Woking United Reformed Church
White Rose Lane, Woking GU22 7HA
Rev. Lucy Brierley Tel: 01483 763078
Email: office@wokingurc.org.uk
www.wokingurc.org.uk



Woking Community Hospital

HEALTH
NHS Direct
Tel: 0845 46 47
Provides advice and information about health and the NHS.
www.nhsdirect.nhs.uk

Hospitals
Alpha Woking
Redding Way, Knaphill
Woking GU21 2QS
Tel: 01483 795100

Nuffield Health Woking Hospital
Shores Road, Woking GU21 4BY
Tel: 01483 227800

Woking Community Hospital
Heathside Road
Woking GU22 7HS
Tel: 01483 715911

Doctors

Brewery Road Surgery
54 Brewery Road, Horsell
Woking GU21 4NA
Tel: 01483 724829

The Family Practice
St Johns Health Centre
Hermitage Rd
St John's, Woking GU21 8TD
Tel: 0844 4771852
www.thefamilypractice-stjohns.org.uk

Goldsworth Park Medical Centre
Denton Way, Woking GU21 3LQ
Tel: 01483 728201

Greenfield Surgery
177 High Street, Woking GU22 9JH
Tel: 01483 711711

Heathcote Medical Practice
York House, Heathside Road
Woking GU22 7XL
Tel: 01483 761100
Appointments Tel: 01483 714230

Hillview Medical Centre
3 Heathside Road, Woking GU22 7QP
Tel: 01483 766333

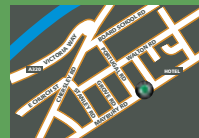
Heathcote Medical Practice – Knaphill
Redding Way, Knaphill, Woking GU21 2DN
Tel: 01483 473464



Colbornes
for all your
Škoda needs



- New Cars
- Used Cars
- Business & Fleet
- Service
- Finance
- Parts & Accessories



Colbornes Škoda
74/76 Maybury Road, Woking, Surrey GU21 5JD

Call **01483 722415**
www.colbornes.co.uk/skoda

WOKING RESIDENTS' GUIDE

The Maybury Surgery

Alpha Road, Woking GU22 8HF
Tel: 01483 728757

The Practice College Road

4-6 College Road, Woking GU22 8BT
Tel: 01483 771309

Westfield Surgery

20 Holmes Close, Westfield
Woking GU22 9LU
Tel: 01483 598512

The Villages Medical Practice

Send Barns Lane, Send
Woking GU23 7BP
Tel: 01483 226330

Dentists

Dental Sense Chobham

41 Windsor Road
Chobham GU24 8LD
Tel: 01276 855994
Email: info@dentalsense.co.uk
www.dentalsense.co.uk

Family Dental Centre

5a Oriental Road, Woking GU22 7AH
Tel: 01483 763360
www.thefamilydentalcentre.com

Lorna Doone Dental Surgery

Chobham Road, Woking GU21 4AA
Tel: 01483 763107

Maycroft Dental Care Centre

Chobham Road
Woking GU21 4AB
Tel: 0844 477 3787

Oasis Dental Care

The Retreat, Guildford Road
Woking GU22 7QJ
Tel: 01483 761777
www.oasisdentalcare.com

Parkside Dental Centre

Goldsworth Park Health Centre
Goldsworth Park
Woking GU21 3LQ
Tel: 01483 766355

Tapsellhurst Dental Surgery

112 High Street, Knaphill
Woking GU21 2QH
Tel: 0844 576 9434

Waterside Dental Centre

Devonshire Avenue
Sheerwater
Woking GU21 5QJ
Tel: 01932 352333
Email: dental.waterside@googlemail.com

Westfield Dental & Implant Centre

The Surgery
1 Westfield Road
Woking GU22 9LZ
Tel: 01483 760804
www.westfielddental.co.uk

The Whitehouse Practice

45 High Street, Knaphill
Woking GU21 2PX
Tel: 01483 473850

EDUCATION

Nursery & Pre-Schools

Asquith Nurseries Ltd

Westfield Avenue
Woking GU22 9PF
Tel: 01483 712910
Email: woking@asquithnurseries.co.uk
www.asquithnurseries.co.uk

Caring Daycare

9 Blackmore Crescent
Woking GU21 5NZ
Tel: 01483 729330
www.caringdaycare.co.uk

Carol's Montessori Day Nursery

Kitterick, Shafesbury Road
Woking GU22 7DU
Tel: 01483 740542
www.carolsmontessori.co.uk

CherryBrook Nursery

Scotland Bridge Road
New Haw GU47 0QF
Tel: 01932 336662
Email: cherrybrook@cherrychildcare.co.uk
www.cherrychildcare.co.uk

CherryWood Nursery

The Green, Cemetery Pales
Pirbright GU24 0JT
Tel: 01483 799514
Email: cherrywood@cherrychildcare.co.uk

Christopher Robin Day Nursery

31 Claremont Avenue, Woking GU22 7SF
Tel: 01483 747131
www.daynurseriesurrey.co.uk

Daydream Nursery Ltd

Hillersdon, Horsell Rise
Woking GU21 4AY
Tel: 01483 714827

Flying Start Nursery & Pyrford Out of School Club

Pyrford C of E Primary School
Coldharbour Road
Pyrford, Woking GU22 8SP
Tel: 01932 348884 or 07941 392986
Email: jackiehord@hotmail.com

Foundations Community Pre-School Ltd

St Peters Church Centre
Church Centre, Old Woking
Woking GU22 9JE
Tel: 07553 988109
www.foundationspreschool.org.uk

Jiminy Cricket Playgroup

c/o Woking & Horsell Cricket Club
Brewery Road
Woking GU21 4LL
Tel: 01483 720120 or 01483 768556
Email: sheila@jiminycricket.co.uk

Kiddiwinks Child Care Ltd

Bishop David Brown School
Albert Drive
Woking GU21 5RL
Tel: 01932 350039
Email: enquiries@kiddiwinks.plus.com
www.kiddiwinkschildcare.co.uk

Busy Bees Day Nursery

50 Cavell Way, Knaphill
Woking GU21 2TJ
Tel: 01483 797966
Email: woking@busybees.com



ALL SAINTS' WOODHAM

Traditional Services • All Welcome • Sunday Services
8:00am First Sunday BCP • 9:45am Parish Mass

www.woodhamparish.com



ST MICHAEL'S SHEERWATER

Sunday Services 10:30 with childrens activity
Methodist & Anglican in Communion

**Missed advertising in this guide and
want to advertise in the next one?**

**Contact one of our sales executives to
discuss your requirements on
01233 643574**

**Don't miss out on this fabulous
advertising opportunity**

For further details and free samples contact

Plus Publishing Services, Sycamore House,
Willesborough Ind. Park, Kennington Road,
Willesborough, Ashford, Kent TN24 0NR

Tel: 01233 643574

Email: admin@pluspublishing.co.uk



PLUS GROUP

WOKING RESIDENTS' GUIDE

Magical Moments

Highlands Adult Education Centre
Bonsey Lane, Woking GU22 9PR
Tel: 07875 569495

New Monument Nursery

Alpha Road, Woking GU22 8HA
Tel: 01483 769302
nursery@newmonument.surrey.sch.uk

Noah's Ark Nursery

Blackhorse Road, Woking GU22 0RE
Tel: 01483 233832
Email: office@noahsark-nursery.co.uk

Peter Pan Pre-School Nursery

St Thomas Church, Littlewick Common
Littlewick Road, Knaphill
Woking GU21 2JZ
Tel: 01483 799838 or 01483 488484
Email: suelewis916@btinternet.com

Teddies Nurseries

15 The Grove, Woking GU21 4AE
Manager: Samantha Rose
Tel: 01483 770054
Email: woking@brighthorizons.com

Toad Hall Nursery

Goldwater Lodge, Wishbone Way
Goldsworth Park, Woking GU21 3RT
Tel: 01483 486116
woking.nursery@toadhall-nursery.co.uk
www.toadhall-nursery.co.uk

West Byfleet Nursery Ltd

Camphill Road
West Byfleet KT14 6EF
Tel: 01932 354284

Woking Day Nursery

David Lloyd Leisure
Westfield Avenue
Woking GU22 9PF
Tel: 01483 712910

Woodlands Pre-School

Barnsby Primary School
Almond Avenue
Woking GU22 0BB
Tel: 01483 772322

Childrens Clubs & Activities

Sunrise Breakfast Club
Holy Trinity Church Hall
Chobham Road
Knaphill
Woking GU21 2SY
Tel: 01483 822245

Sythwood Primary School Breakfast & After School Club

Sythwood CP School
Sythwood
Woking GU21 3AX
Tel: 01483 770063
Email: outofhours@sythwood.surrey.sch.uk

Parent & Toddler Groups

Bethany Babes St Mary of Bethany Church
Mount Hermon Road
Woking GU22 7UH
Tel: 01483 723424
Please call to check for vacancies
Mondays 2.00pm–3.30pm
Tuesdays 10am–11.30am
Wednesdays 10am–11.30am

Primary Schools

Barnsbury Primary School
Almond Avenue
Woking GU22 0BB
Tel: 01483 763114
www.barnsbury.surrey.sch.uk

Beaufort Primary School

Kirkland Avenue, Goldsworth Park
Woking GU21 3RG
Tel: 01483 474986
www.beaufort.surrey.sch.uk
Email: office@beaufort.surrey.sch.uk

Bisley C of E Primary School

Hawthorn Way, Bisley
Woking GU24 9DF
Tel: 01483 473341

Broadmere County Primary School

Devonshire Avenue, Sheerwater
Woking GU21 5QE
Tel: 01932 343747
www.broadmere.surrey.sch.uk

"Outstanding" Day Nursery in Chobham

*Delivering high quality care
to your child*

- ✓ Ages 6 weeks - 5 years
- ✓ Open 52 weeks a year
- ✓ Fantastic outdoor facilities

Pennypot Day Nursery

Pennypot Lane, Chobham
GU24 8DH

01276 855886

www.childbase.com

PP103



WOKING RESIDENTS' GUIDE



KNAPHILL



10%



GUILDFORD

OFF EVERYTHING



ASHTEAD

Hotpoint

BOSCH



RSM

Domestic Appliances

FRIENDLY SERVICE • BIG SAVINGS • FAST DELIVERY

**Mention Woking Residents' Guide
and get 10% off your next order!**

Applies to all appliances at in-store prices only. Excludes web price matching. Excludes repairs, installations, deliveries, call-outs and removals. Not in conjunction with any other offer. Full terms and conditions available on request.

Call 01483 475000

www.rsmdomesticappliances.com

WOKING RESIDENTS' GUIDE

Brookwood Primary School & Children's Centre

Connaught Road, Brookwood
Woking GU24 0HF
Tel: 01483 473315
Email: admin@brookwood.surrey.sch.uk

Coworth-Flexlands School

Valley End, Chobham
Woking GU24 8TE
Tel: 01276 855707
www.coworthflexlands.co.uk
Email: secretary@coworthflexlands.co.uk

Goldsworth Primary School

Bridge Barn Lane, Woking GU21 6NL
Tel: 01483 771321
www.goldsworth.surrey.sch.uk

Greenfield School

Brooklyn Road, Woking GU22 7TP
Tel: 01483 772525
www.greenfield.surrey.sch.uk
Email: schooloffice@greenfield.surrey.sch.uk

Halstead Preparatory School for Girls

Woodham Rise, Woking GU21 4EE
Tel: 01483 772682
www.halstead-school.org.uk

The Hermitage School

Oakwood Road, St Johns
Woking GU21 8UU
Tel: 01483 472047
Email: info@hermitage.surrey.sch.uk
www.hermitage.surrey.sch.uk

Hoe Bridge School

Hoe Place, Old Woking Road
Woking GU22 8JE
Tel: 01483 760018
www.hoebridgeschool.co.uk
Email: enquiriesprep@hoebridgeschool.co.uk

Holy Trinity C of E Primary School

Benner Lane, West End
Woking GU24 9JQ
Tel: 01276 858297
www.holy-trinity-pri.surrey.sch.uk
Email: info@holy-trinity-pri.surrey.sch.uk

The Horsell Village School

Church Hill, Horsell
Woking GU21 4QQ
Tel: 01483 714804
www.horsell-village.surrey.sch.uk
Email: reception@horsell-village.surrey.sch.uk

Horsell C of E Junior School

Meadway Drive, Horsell
Woking GU21 4TA
Tel: 01483 761531
www.horsell-junior.co.uk

International School of London in Surrey

Old Woking Road, Woking GU22 8HY
Tel: 01483 750409
www.islsurrey.com
Email: info@islsurrey.com

Kingfield School

Kingfield Road, Westfield
Woking GU22 9EQ
Tel: 01483 761885
Email: info@kingfield.surrey.sch.uk
www.kingfield.surrey.sch.uk

Knaphill Junior School

High Street, Knaphill, Woking GU21 2QH
Tel: 01483 888899
Email: office@knaphill.surrey.sch.uk
www.knaphilljuniorschool.com

Knaphill Lower School

Chobham Road, Knaphill
Woking GU21 2SX
Tel: 01483 473282
Email: office@knaphill-lower.surrey.sch.uk
www.knaphill-lower.surrey.sch.uk

Maybury Infant School

Walton Road, Woking GU21 5DW
Tel: 01483 763272
www.maybury.surrey.sch.uk

New Monument School

Alpha Road, Woking GU22 8HA
Tel: 01483 769302
www.newmonument.surrey.sch.uk
Email: info@newmonument.surrey.sch.uk

The Oaktree School

Gorsewood Road, St Johns
Woking GU21 8WT
Tel: 01483 474981
www.oaktreeschool.co.uk
Email: office@oaktree.surrey.sch.uk

Pirbright Village Primary School

School Lane, Pirbright, Woking GU24 0JN
Tel: 01483 473884
www.pirbrightvillageprimarieschool.com

Pyrford C of E Aided Primary School

Coldharbour Road, Pyrford
Woking GU22 8SP
Tel: 01932 342693
www.pyrford.surrey.sch.uk

Ripley C of E Primary School

Wentworth Close, Ripley
Woking GU23 6ED
Tel: 01483 225307
www.ripleyschool.co.uk

Ripley Court School

Rose Lane, Ripley, Woking GU23 6NE
Tel: 01483 225217
Email: info@ripleycourt.co.uk
www.ripleycourt.co.uk

Send C of E First School

Send Barns Lane, Send
Woking GU23 7BS
Tel: 01483 223464
www.sendfirstschool.co.uk

St Andrews (Woking) School Trust

Church Hill House, Wilson Way
Horsell, Woking GU21 4QW
Tel: 01483 760943
Email: admin@st-andrews.woking.sch.uk
www.st-andrews.woking.sch.uk

St Bede's C of E Junior School

Bush Lane, Send
Woking GU23 7HP
Tel: 01483 222143
Email: info@stbedes-junior.surrey.sch.uk
www.stbedes-junior.surrey.sch.uk

St Dunstons Catholic Primary School

Onslow Crescent, Woking GU22 7AX
Tel: 01483 715190
www.stdunstons.surrey.sch.uk

St Hugh of Lincoln Catholic Primary School

Five Oaks Close, St Johns
Woking GU21 8TU
Tel: 01483 480441
www.sthugh-of-lincoln.surrey.sch.uk

St Johns Primary School

Victoria Road, Knaphill
Woking GU21 2AS
Tel: 01483 476450
www.st-johns-knaphill.org

St. Lawrence C of E Primary School

Bagshot Road, Chobham
Woking GU24 8AB
Tel: 01276 858336
www.stlawrenceprimary.co.uk
Email: info@stlawrenceprimary.co.uk

Sythwood Primary School

Sythwood, Horsell, Woking GU21 3AX
Tel: 01483 770063
www.sythwood.surrey.sch.uk

Westfield Primary School

Bonsey Lane
Woking GU22 9PR
Tel: 01483 764187
Email: head@westfield.surrey.sch.uk
www.westfield.surrey.sch.uk

Valley End C of E Infant School

Highams Lane, Valley End
Chobham, Woking GU24 8TB
Tel: 01276 858299
www.valleyend.surrey.sch.uk

Secondary Schools & Colleges

The Bishop David Brown School

Albert Drive
Woking GU21 5RF
Tel: 01932 349696
www.bishopdavidbrown.surrey.sch.uk



- A family owned and run business, rated as excellent (3 star) by the national inspectorate (CQC)
- a friendly, flexible service with help available from 1 hour per week to 24 hour live-in care.
- Trustworthy, caring, professional staff, fully trained and referenced with Criminal Records clearance.
- We can offer you support with: personal care, bathing, hair washing, physical therapy exercises, companionship, nursing care, simple cooking, shopping, medication management, ironing or light domestic duties, gardening and handyman services.



For further information,
or to arrange a free no
obligation meeting in your home,
please call **01483 797950**
or visit our website **www.astoragency.co.uk**

WOKING RESIDENTS' GUIDE

Gordon's School

West End, Woking GU24 9PT
Tel: 01276 858084
www.gordons.surrey.sch.uk

St John the Baptist Secondary School

Elmbridge Lane
Woking GU22 9AL
Tel: 01483 729343
www.sjb.surrey.sch.uk

The Winston Churchill School

Hermitage Road, St Johns
Woking GU21 8TL
Tel: 01483 476861
Email: office@wscs.org
www.wscs.org.uk

Woking High School

Morton Road, Horsell GU21 4TJ
Tel: 01483 888447
Email: info@wokinghigh.surrey.sch.uk
www.wokinghigh.surrey.sch.uk

Woking College

Rydens Way, Woking GU22 9DL
Tel: 01483 761036
www.woking.ac.uk

Special Schools

North West Surrey Short Stay School

The Kingsway Centre
45 Kingsway, Woking GU21 6NT
Tel: 01483 728474
www.woking.surrey.sch.uk

The Park School

Onslow Crescent, Woking GU22 7AT
Tel: 01483 772057
www.thepark.surrey.sch.uk

LOCAL GOVERNMENT

Woking Borough Council

Civic Offices, Gloucester Square
Woking GU21 6YL
Tel: 01483 755855
www.woking.gov.uk

Surrey County Council

Contact Centre, Floor 3
Conquest House, Wood Street
Kingston upon Thames KT1 1AB
Tel: 03456 009 009
www.surreycc.gov.uk

CHARITABLE & VOLUNTARY ORGANISATIONS

The Alzheimer's Society

The Bradbury Centre
Smiles Place
Lavender Road
Maybury GU22 8BJ
Tel: 01483 753650
www.alzheimers.org.uk/woking

British Heart Foundation

Tel: 01483 723088



Civic Offices

Carers' Support

Room 1, 15A Monument Way East
Woking GU21 5LY
Tel: 01483 727277
BME Tel: 01483 757272

Mencap

Tel: 01276 451845

Surrey Disabled Peoples Partnership

Provincial House, 26 Commercial Way
Woking GU21 6EN
Tel: 01483 750973
Email: home@sdpp.org.uk
www.sdpp.org.uk

St Peters Convent

Maybury Hill, Woking GU22 8AB
Tel: 01483 750739
www.stcolumbashouse.org.uk

Walk The Walk

Unit 6, Genesis Business Park
Albert Drive, Woking GU21 5RW
Tel: 01483 741430
www.walkthewalk.org

Woking Association of Voluntary Service

26 Commercial Way, Woking GU21 6EN
Tel: 01483 751456
Email: info@wavs.org.uk
www.windowonwoking.org.uk/wavs

Woking Community Transport Ltd

Old School Place, Woking GU22 9LY
Tel: 01483 724433
Email: enquiries@wokingbustler.org.uk
www.wokingbustler.org.uk

Woking Recreational Boating for the Handicapped

Contact: Margaret Gammon
Tel: 01483 714651
Email: michaelgammon@btinternet.com
Bookings Contact: Mrs Ray
Tel: 01483 761499

Woking YMCA

Ypod Centre, Chobham Road
Woking GU21 6JD
Tel: 01483 757160
Email: admin@wokingymca.org.uk
www.wokingymca.org.uk

SPORTS & LEISURE

Leisure Centres Woking Leisure Centre & Pool in the Park

Woking Park, Kingfield Road
Woking GU22 9BA
Tel: 01483 771122
Email: leisurecentre@woking.gov.uk
Email: poolinthepark@woking.gov.uk

CLUBS & SOCIETIES

Ripley British Legion Social Club

27 Rose Lane, Ripley
Woking GU23 6NE
Tel: 01483 224616

The Vyne Community Centre

The Broadway, Knaphill
Woking GU21 2SP
Tel: 01483 743558

Woking Community Furniture Project

27 North Road, Maybury, Woking GU21 5DT
Tel: 01483 750005
Email: wokingcftp@gmail.com
www.wokingcftp.org.uk

Woking Conservative Club

Mount Herman Road, Woking GU22 7TA
Tel: 01483 762146

Woking Lions Club

Club Secretary: Alan Bartlett
Tel: 01483 765060
Email: alan.bartlett@wokinglions.org.uk
www.wokinglions.org.uk

Woking Rotary Club

Hoebriidge Golf Club
Old Woking Road
Old Woking GU22 8JH
Contact: Terry Smith
Tel: 01483 762832
www.rotarywoking.co.uk

USEFUL INFORMATION

Woking Citizens Advice Bureau

Provincial House, 26 Commercial Way
Woking GU21 6EN
Tel: 0844 375 2975
www.adviceguide.org.uk

Woking Police Station

Station Approach, Woking GU22 7SY
Emergency Tel: 999
To report non urgent crime
Tel: 0845 125 2222
www.surrey.police.uk

Woking Fire Station

Cawsey Way, Woking GU21 1HD
Emergency Tel: 999

Library

Woking Library

Gloucester Walk
Woking GU21 6EP
Tel: 0300 200 1001

Greys Home Care

Based in Hook Heath in Woking

Quality Care in Your Own Home

Established by Mr Stephen Kennedy & Mrs Jo Kennedy, Greys Home Care offers private homecare for the elderly. Offering unrivalled services to private residences in Surrey our clients benefit from maintaining their privacy and independence in their own home.



When caring for clients, our emphasis is on quality time and attention offering a relaxed and a happy homely atmosphere. We offer quality care, not rushed care.



Our care team will tailor your care package around you. We can help you with:

- Personal care, washing, bathing and dressing
- Shopping and meal preparation
- Light domestic duties
- Help with medication • Companionship
- Home from hospital care
- Holiday cover • Live-in-care

Prices from £15.00 per hour.

Hook Heath Road, Woking, Surrey GU22 0JQ

Tel: 01483 771523

www.greysresidential.co.uk



WOKING RESIDENTS' GUIDE



Saint Columba's House offers contemporary facilities for 21st C Spiritual & Commercial Conference needs. We combine a reflective, quiet atmosphere and traditional open Christian hospitality, with excellent standards of residential and meeting accommodation, and catering services. Please arrange with us to come for a visit and tour.



Saint Columba's Chapel

St Cuthbert's Meeting Room

Reception Tower

Meeting: For spiritual, charity or commercial groups we have seven formal and informal meeting rooms (4-100 day delegate capacity) with internet and telephone access for small to large group gatherings and breakout groups, all with audio loop.

There are also provisions for internet projection, telephone conferencing, and presentations. You can even set up a temporary office during your stay to allow groups to keep in touch with continuing business. We have a reputation for providing secure and confidential meeting spaces for interviewing or managing discrete grievance procedures.

In St Peter's lounge we have a large screen HD TV for business or leisure us.

Personal Spirituality: see our spirituality programme on our website. We have **Celtic Daily Prayers** Mon-Friday at 9am, 12.30pm, and 5pm and **Celtic Mass** Sunday 9am, Monday & Friday 11am.

Residential 3 Star (QiT) Bedrooms: All main house bedrooms have telephone, internet, and freeview TV access; 22 single ensuite rooms (2 for guests with disability); 1 twin ensuite bedroom; in our **Redwood** annexe we have 3 twin ensuite and 1 twin with adjacent facilities.

Catering: We provide B&B, Full Board, Bar, and Buffet facilities to suit all users.

Contact T: 01483 766498; E: retreats@stcolumbushouse.org.uk;

W: www.stcolumbushouse.org.uk

St Columba's House, Maybury Hill, Woking, Surrey. GU22 8AB.



Woking High School
A Specialist Technology College



OPEN EVENING

TUESDAY 4TH OCTOBER 2011 6.30pm - 9.00pm

Principal's address at 7.00pm and 8.00pm.

Tours from 6.30pm.

OPEN MORNINGS

(by appointment, please telephone the main school office)

- 9.15am – 11.00am Thursday 6th October 2011
- 9.15am – 11.00am Tuesday 11th October 2011
- 9.15am – 11.00am Thursday 13th October 2011

You are invited to visit this open access, comprehensive, specialist Technology School, which celebrates high standards and very good examination results. Excellent ICT and Design & Technology facilities and a stimulating, exciting range of both academic and enrichment opportunities are available for all students.

Ofsted May 2007:

'This is a good school where students' behaviour is exemplary'. 'There is a very strong focus on learning and achieving and this combines well with the supportive and caring atmosphere of the school'.



Principal: Jane Abbott BA., MA
Morton Road, Horsell, Woking, Surrey GU21 4TJ

Tel: 01483 888447 Fax: 01483 888448

Email: info@wokinghigh.surrey.sch.uk

Website: www.wokinghigh.surrey.sch.uk

Inspire, Challenge, Achieve